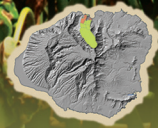


# KAMEHAMEHA SCHOOLS STRATEGIC AGRICULTURAL PLAN

## AGRICULTURE & CONSERVATION LANDS

### KAUA'I: 10,855 TOTAL ACREAGE

Agriculture: 1,215  
Conservation: 9,640  
Genealogy: Konia, Kamehameha V,  
Ke'elikōlani



### O'AHU: 46,985 TOTAL ACREAGE

Agriculture: 14,755  
Conservation: 32,230  
Genealogy: Pāki, Konia,  
Kamehameha V, Kekūanā'ō'a, Kekūāiwa,  
Ke'elikōlani, Kamāmalu, Leleiōhoku



### MOLOKAI: 4,900 TOTAL ACREAGE

Agriculture: 3,270  
Conservation: 1,630  
Genealogy: Kamehameha V,  
Leleiōhoku



### MAUI: 2,465 TOTAL ACREAGE

Agriculture: 1,200  
Conservation: 1,265  
Genealogy: Ke'elikōlani, Kamāmalu

### HAWAII ISLAND: 293,065 TOTAL ACREAGE

Agriculture: 160,935  
Conservation: 132,130  
Genealogy: Kamehameha V, Kamāmalu,  
Bishop, Kekūāiwa, 'Akahi, Ke'elikōlani,  
Konia, Lunalilo, Mahune, Kekūanā'ō'a,  
Leleiōhoku



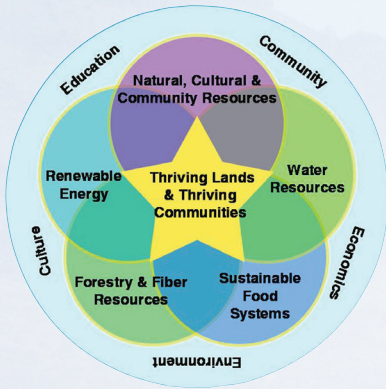
Kamehameha Schools (KS) inherited a land legacy of approximately 365,000 acres of land throughout the State of Hawai'i. 98 percent of this land kuleana is in agriculture and conservation and is managed by the Land Assets Division (LAD).

The KS Strategic Agricultural Plan was developed to provide a vision and goal-based strategy for optimal management and use of the Schools' 181,373 acres of agriculture lands on the islands of Hawai'i, Maui, Molokai, O'ahu and Kaua'i. This strategy firmly positions Kamehameha Schools as an agricultural leader in Hawai'i. It represents a bold "stake in the ground" in the Land Assets Division's migration from passive land management to active agricultural engagement and stewardship.

LEGEND State Land Use

Agriculture Conservation Other





*The Strategic Agricultural Plan is vital to LAD's vision of "Thriving Lands and Thriving Communities" and will be a driver for Renewable Energy, Water Resources, Forestry and Fiber Resources, and Sustainable Food Systems for many years to come.*

*Power the Future.  
Promote renewable  
energy project as a  
strategic facet of KS'  
agricultural portfolio.*

## BENEFITS TO THE COMMUNITY

- Increase market share of locally grown produce, bringing Hawai'i a step closer to self-sufficiency
- Boost the grass-fed beef industry and potentially bring local dairies back to life
- Host a diverse mix of renewable energy projects to increase the State's renewable energy mix and reduce carbon emissions
- Provide new jobs and promote new industries in rural areas
- Improve the quality of life for our people through healthy food, good jobs, clean energy and sustainable livelihoods

*This plan identifies 10 goals and 21 strategies over the next 20-30 years with updates scheduled for every five years.*

## GOALS

Goal 1: Increase the production of fruits, vegetables, meat and other food products on KS lands for the local market.

Strategy 1A. Farm the Grass. A fundamental shift in range management to actively farm the grass through the creation of finish and rotational pastures, application of best management practices, and the integration of agro-forestry.

Strategy 1B. Expand what's Working. Ensure that sufficient acreage is provided to supply local market demand, and expand acreage in irrigated and un-irrigated vegetable, fruit and other food crops.

Goal 2: Supply locally grown products, ideally from KS lands, to KS campuses and facilities.

Strategy 2A. Farm to Facilities. Increase the amount of local agricultural products purchased by KS campuses and facilities, having them purchase food from KS and/or local farmers via an efficient distribution network.





## Explore agriculture research and development opportunities.



Goal 3: Restore and revitalize traditional systems: lo`i, loko i`a, and dryland field systems.

Strategy 3A. Mahia`i ku`una. It is central to the Schools' mission to dedicate a portion of its lands to traditional crops and to make investments in assisting the perpetuation of these crops.

Strategy 3B. Kanu Hawai`i. Preserve and perpetuate traditional cultivars and cropping. The number, purity and availability of native agricultural and medicinal Hawaiian plants are a serious concern, and KS should take a role in protecting our heritage plants.

Goal 4: Support agricultural education, business planning, and farmer certification programs.

Strategy 4A. Knowledge is Key. Facilitate farmer education programs, especially in agribusiness planning, crop innovation, disease/pest control and financing. Promote KS farmer certification in critical "need" areas such as food safety and organic farming.

Strategy 4B. Growing Farmers. Kamehameha Schools' education, community and agriculture efforts should be integrated to help create the next generation of farmers.

Goal 5: Actively engage in agricultural marketing and media.

Strategy 5A. Communicate with our Farmers. Develop internal media mechanisms primarily aimed at KS farmers and stakeholders.

Strategy 5B. Promote Hawai`i Ag. Develop marketing and media aimed at promoting agriculture as an industry in Hawai`i.

Goal 6: Strategically invest in agricultural support facilities and infrastructure.

Strategy 6A. Water the People's Food. Strategically invest in irrigation projects to increase the value and productivity of KS agricultural lands.

Strategy 6B. Process, Distribute, and Market. Develop improved processing, distribution and marketing capabilities in key diversified agricultural areas.

Strategy 6C. Improve Infrastructure. Improve roads, security, power and other supporting agricultural infrastructure.

Goal 7: Explore agriculture research and development opportunities.

Strategy 7A. Lead the Playing. Become a Hawai`i leader in agriculture research, planning, and strategy.

Strategy 7B. Learn from the Land. Strategically dedicate KS lands towards "in-the-ground" agricultural research aimed at improving KS' stewardship and optimization of its agricultural lands.



Goal 8: Develop a robust and consistent set of agricultural decision-making tools, procedures and guidelines.

Strategy 8A. Sharpen the Tools. Implement an agricultural inspection system which meets KS policy/legal/risk needs while simultaneously collecting data on important agricultural metrics.

Strategy 8B. Optimize the Leasing Process. Develop consistent agricultural leasing guidelines which are in alignment with and support the Strategic Agricultural Plan strategies.

Strategy 8C. Practice what we Preach. Develop agricultural best management practices which align with KS' values and mission as well as industry standards.

Goal 9: Contribute to a sustainable clean energy future for Hawai'i through education, energy efficiency gains and renewable initiatives.

Strategy 9A. Power the Future. Promote renewable energy project as a strategic facet of KS' agricultural portfolio.

Strategy 9B. Reduce and Re-wire. Work to promote energy conservation and efficiency at KS campuses, facilities, and farms.

Goal 10: Steward forestlands in consideration of the full range of ecosystem services and resource extraction activities- including native forest reforestation, traditional forest products, and energy production.

Strategy 10A. Own the Forest. Take a leadership role in the timber industry; for energy, ecosystem services, and traditional forest products.

Strategy 10B. Plant for the Future. Initiate long-term, sustainable hardwood program with a focus on native Hawaiian hardwoods.



KAMEHAMEHA SCHOOLS®

For more information on the Strategic Agricultural Plan, email us at [land@ksbe.edu](mailto:land@ksbe.edu).