

As the birth site of Kauikeaouli, who would become Kamehameha III, Keauhou Bay is well-known for its rich cultural resources, ocean recreational activities, and resort quality environment.

The bay is highly used by visitors and community groups. Kama'āina and visitors alike visit the birth place of the ali'i.

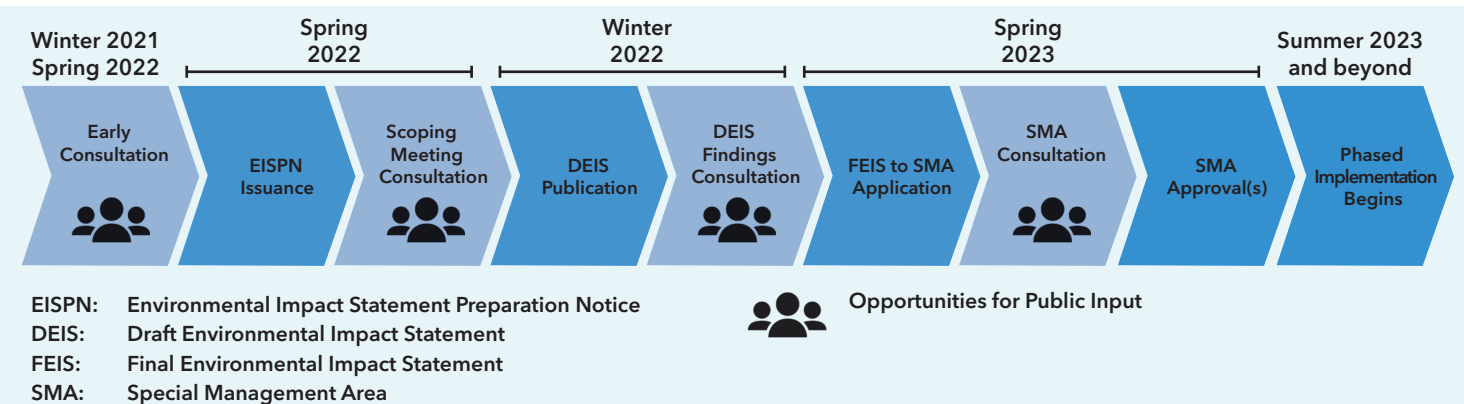
*He aupuni palapala ko'u.
Mine is a literate nation.*

*Ua mau ke ea o ka 'āina i ka pono
The life of the land is perpetuated in
righteousness.*

-na Kauikeaouli

Implementation of the Keauhou Bay Management Plan (KBMP), requires compliance with State and County laws and administrative rules related to the management, use, and protection of coastal lands surrounding Keauhou Bay. A Special Management Area (SMA) permit is a management tool that ensures activities proposed within the KBMP meet the objectives and policies established for: recreational and historic resources; beach protection; marine resources; scenic and open space resources; coastal ecosystems; and appropriate development.

The application for an SMA permit requires that KS complete the State Environmental Review Process, commencing with the preparation and review of an Environmental Impact Statement (EIS). An EIS determines if the proposed actions have any significant environmental impacts. The environmental review process includes opportunities for community input as presented below.



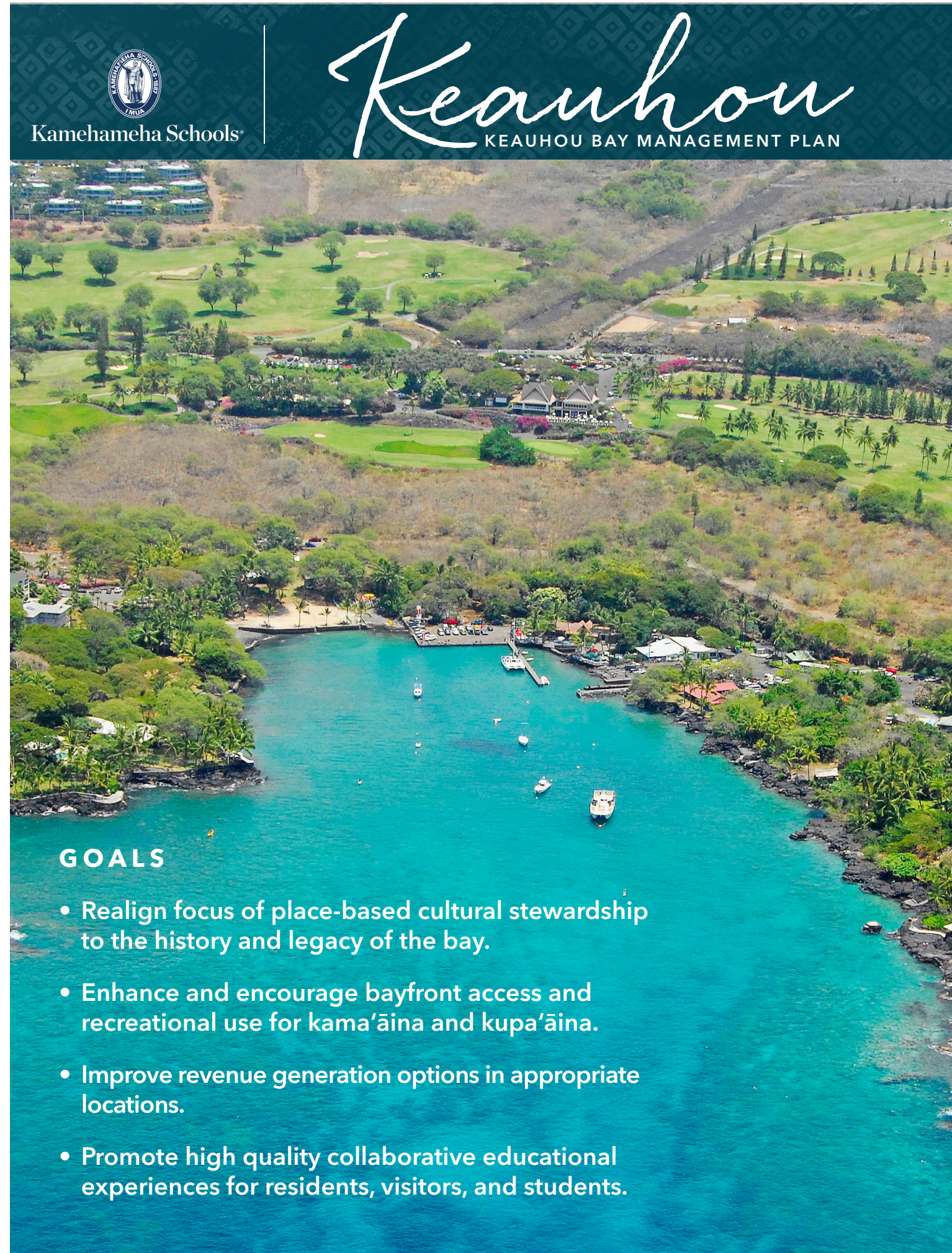
The community consultation process for the Keauhou Bay Management Plan was held between 2016 and 2019. Participants represented varied stakeholder groups including:

- Keauhou Kūpuna
- Daughters of Hawai'i
- Cultural Descendants
- Commercial Operators
- County of Hawai'i Mayor's Office
- County of Hawai'i Planning Department
- Elected Officials
- Educational Users
- He'eia Bay Forever
- Keauhou Bay Area Residents
- Outrigger Kona Resort & Spa
- Recreational Users
- Royal Order of Kamehameha

Next steps in 2022 include more community consultations, public meetings and comment period.

If you have questions, please contact us at keauhoubay@ksbe.edu or visit our website http://www.ksbe.edu/keauhou_bay


Kamehameha Schools
Kamehameha Schools' mission is to fulfill Pauahi's desire to create educational opportunities in perpetuity to improve the capability and well-being of people of Hawaiian ancestry.

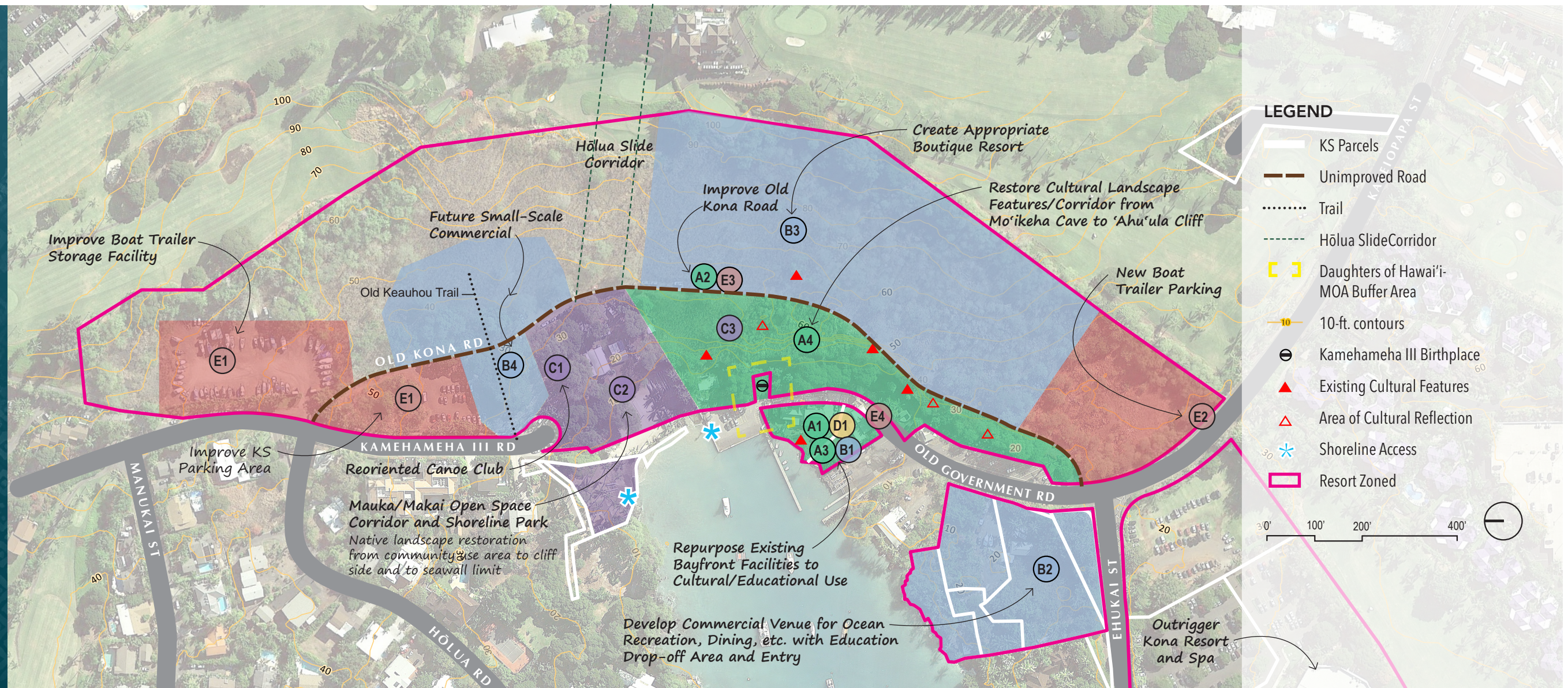


GOALS

- Realign focus of place-based cultural stewardship to the history and legacy of the bay.
- Enhance and encourage bayfront access and recreational use for kama'āina and kupa'āina.
- Improve revenue generation options in appropriate locations.
- Promote high quality collaborative educational experiences for residents, visitors, and students.

THE PLAN

- Includes short-term and long-term management and land use plans to guide operations and prioritize future improvements at Keauhou Bay based upon community values and Kamehameha Schools' Strategic Plan.
- The project area includes approximately 29 acres of Kamehameha Schools lands in the Keauhou Bay area.
- Facilitates cooperation and collaboration between Kamehameha Schools, community/education partners and stakeholders in the management of natural, cultural, and commercial resources.



KEAUHOU BAY MANAGEMENT PLAN RECOMMENDATIONS

A Establish a Heritage Management Corridor	B Reposition & Develop Commercial Bayfront Areas and Appropriate Density Resort Area	C Reorient Recreational and Community Use	D Maintain and Establish New Place-based Cultural Educational Areas	E Manage Vehicle, Boat and Pedestrian Circulation & Wayfinding
<p>A1 Relieve commercial /vehicle congestion away from wahi pana.</p> <p>A2 Re-establish old Kona road as main vehicle thoroughfare.</p> <p>A3 Repurpose existing commercial facilities to culture/education to reduce impact in corridor.</p> <p>A4 Restore Cultural Landscape and extend pedestrian friendly walking path along Ahu'ula Cliff to Mo'ikeha Cave.</p>	<p>B1 Relocate existing commercial operators away from culturally sensitive areas.</p> <p>B2 Organize existing ocean recreation commercial operators and food and beverage establishment in a new facility.</p> <p>B3 Create sustainable, low rise, Boutique Resort on resort-zoned upper plateau of Bay area.</p> <p>B4 Explore opportunities for commercial kīpuka where appropriate.</p>	<p>C1 Improve public access by establishing a Mauka/Makai Corridor.</p> <p>C2 Expand Ka'ili'ilinehe Beach Park as the entry to an open space, Shoreline Corridor.</p> <p>C3 Consider open space and walking path above 'Ahu'ula Cliff to ensure protection of view planes and culturally significant areas.</p>	<p>D1 Repurpose existing Bayfront facilities to support educational programming with a community collaborator.</p> <p>D2 Cultivate community collaborator capacity to include Bay area management & community-based economic development.*</p>	<p>E1 Improve boat and vehicle parking on north side of Bay.</p> <p>E2 Alleviate congestion by exploring opportunities with DLNR/DOBOR on potential relocation/expansion of boat trailer parking.</p> <p>E3 Re-establish old Kona road to relieve vehicular congestion at Bayfront in heritage corridor.</p> <p>E4 Explore access management opportunities with Hawai'i County & DLNR to address traffic and deliveries at Harbor/Pier.</p> <p>E5 Organize active commercial/resort uses to the south side, and community/recreational use to the north side.*</p> <p>E6 Implement a comprehensive wayfinding & interpretive signage plan.*</p>

* Applies to entire project area