



# Native Hawaiian Population Statistics Update

Updated: March 20, 2001

Policy Analysis & System Evaluation

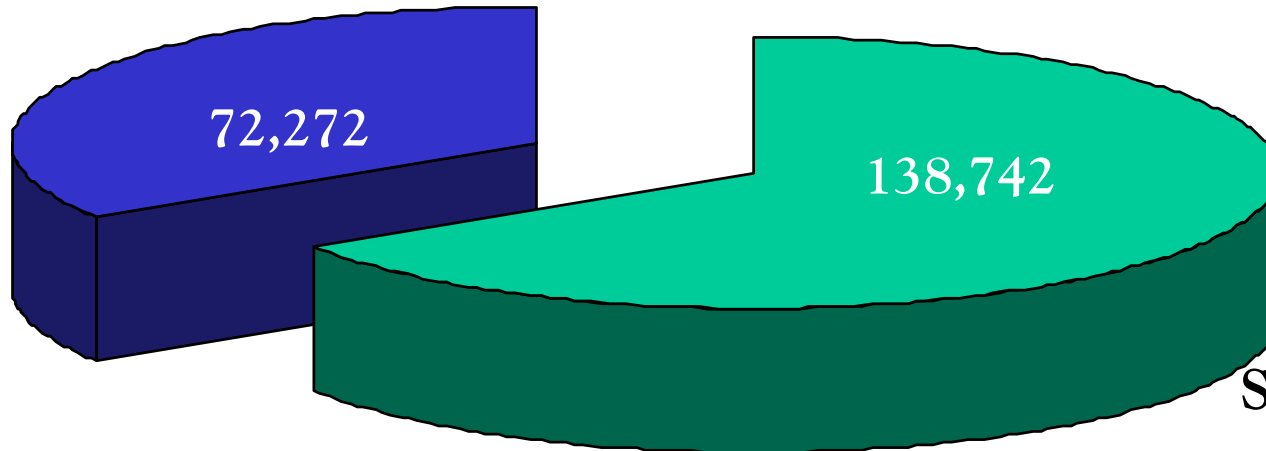
PASE Report No. 2000-2001: 18

March 2001



## Native Hawaiian Population Counts: 1990 Census - Single Race

U.S. Mainland  
34.2%



State of Hawaii'i  
65.8%

Total U.S. Hawaiian Population 211,014



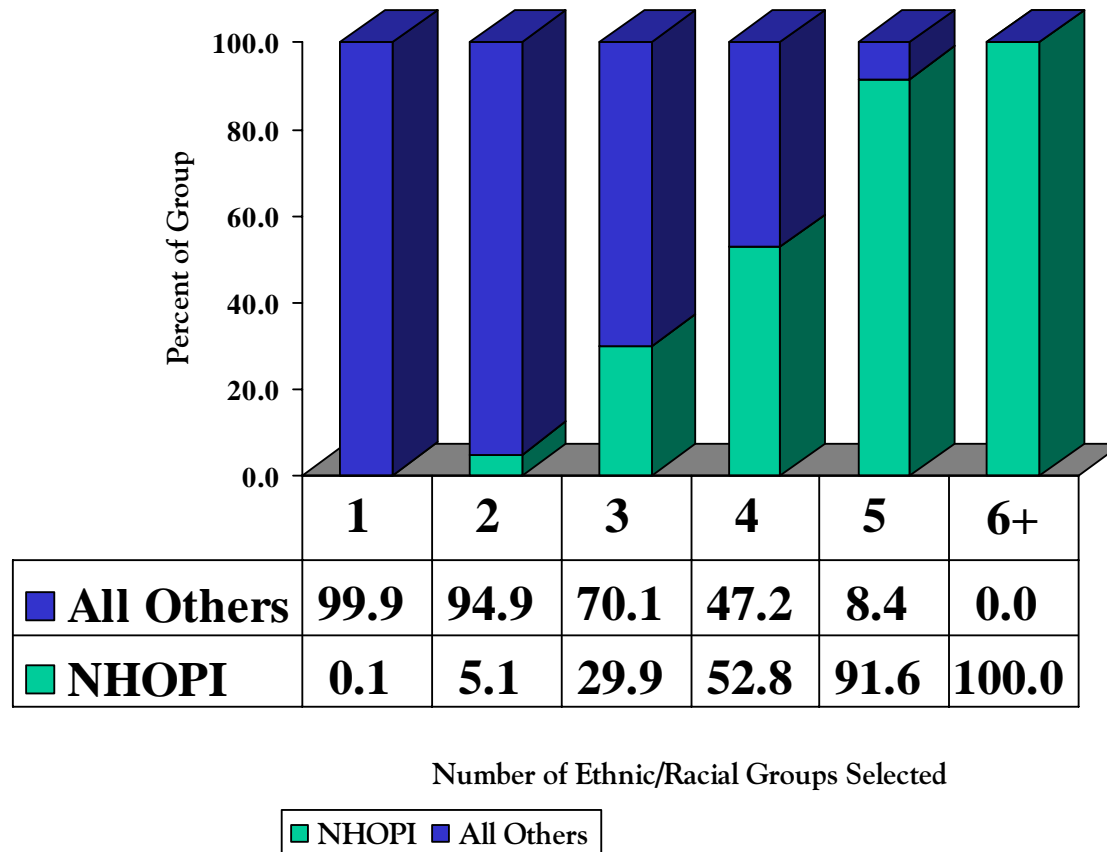
## Race & Ethnicity in the Census 2000

- **Hawai‘i State is a very diverse population.** Roughly one in every five of the 1.2 million in the state declared more than one race -- compared to only 2.4% of the nation’s total population, and 4.7% of California’s population.
- **Total Asian population 703,232** [\[i\]](#): The most common race response in Hawai‘i was Asian, followed by White, and Native Hawaiian or Pacific Islander (NHOPI).
- **Total NHOPI population 282,667** [i](#): People reporting NHOPI race were the most racially diverse. 40% of Hawaii’s NHOPI category marked only one race, while the remaining 60% reported more than one race. Most Asians marked a single race and about 61% of Whites in the state reported a single race/ethnic origin.
- **How many Hawaiians?** The answer to this question is yet unknown. Although more than 80,000 individuals reported Hawaiian race with no other racial category, more detailed race data are currently unavailable to count what promises to be a much larger population of multiracial Hawaiians.

[\[i\]](#) Note that these numbers are not unduplicated counts because they reflect individuals who report one or more races by each category of Asian, White, or NHOPI race.

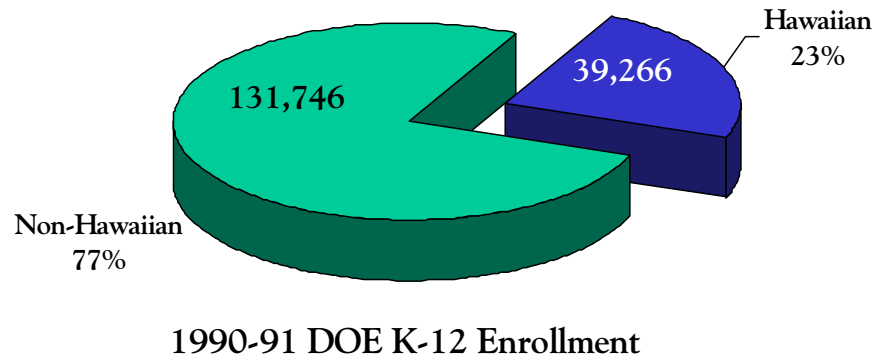
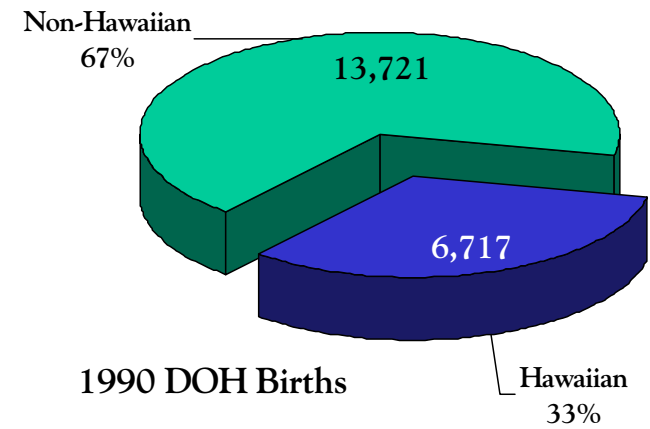
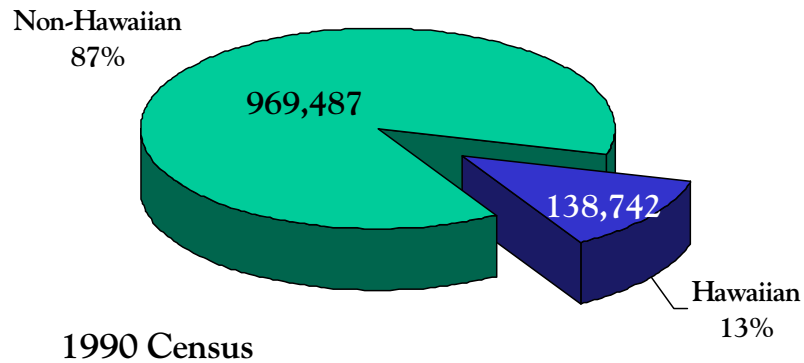


# Native Hawaiians & Other Pacific Islanders (NHOPI) Representation by Number of Racial Groups Selected, U.S.



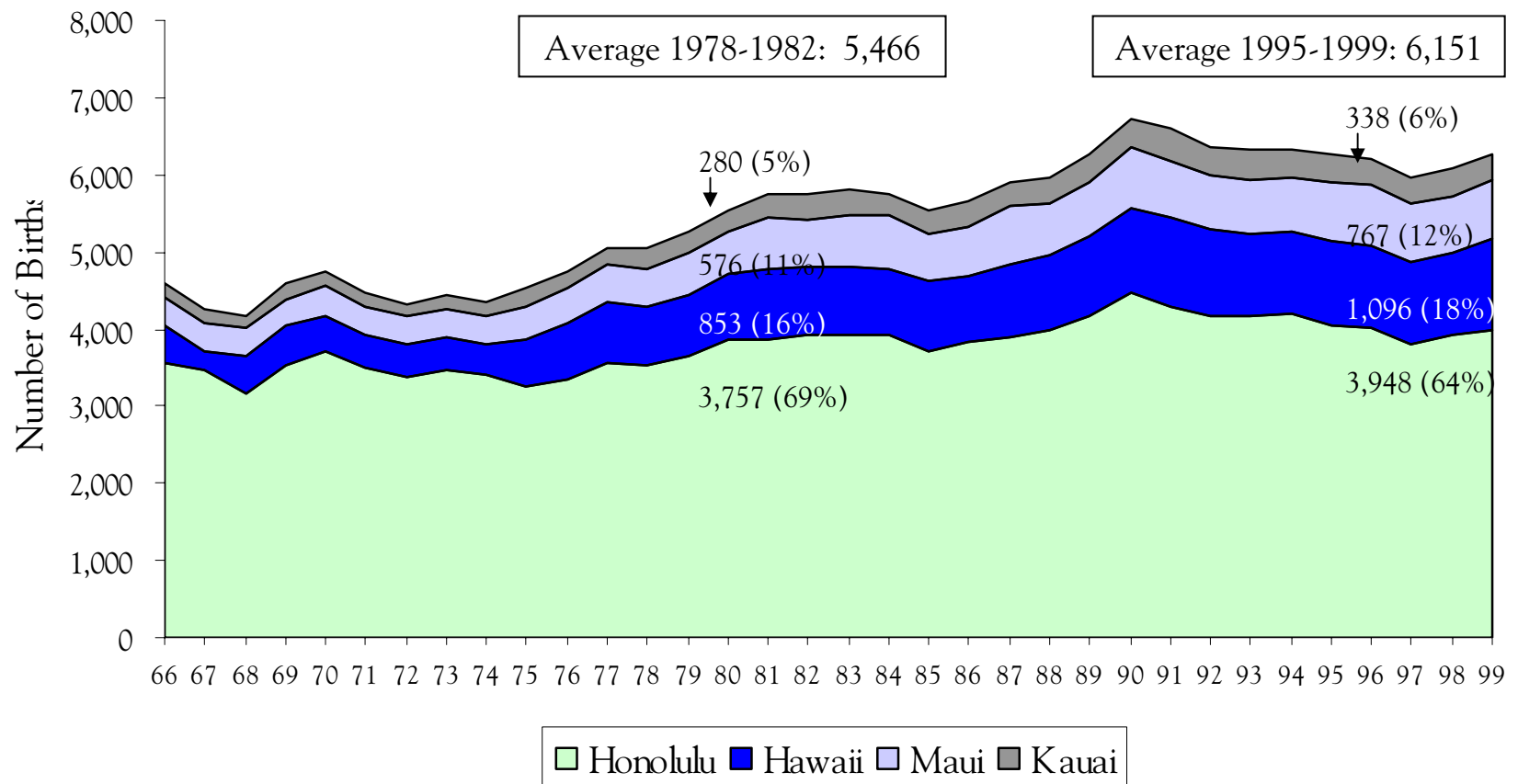


# Native Hawaiian Population Counts - Hawai'i Only, 1990



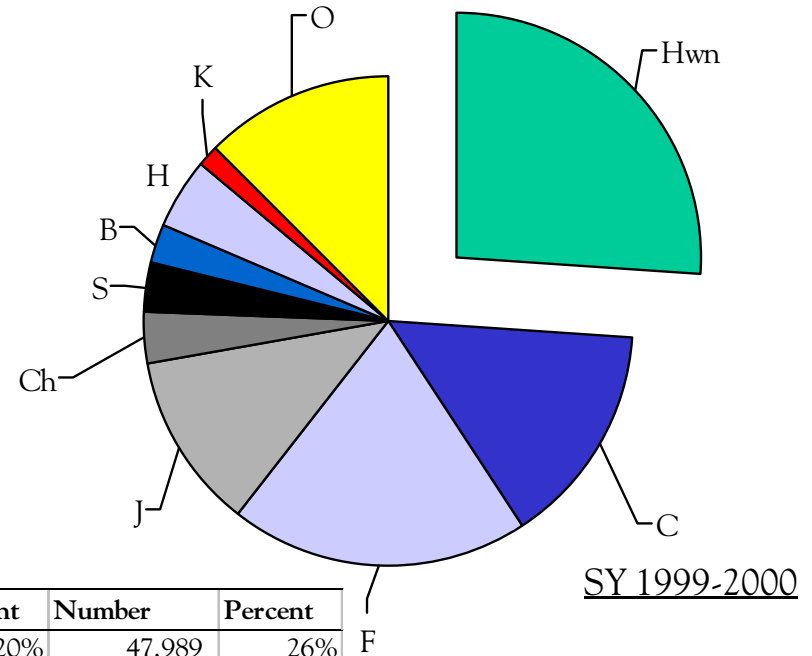
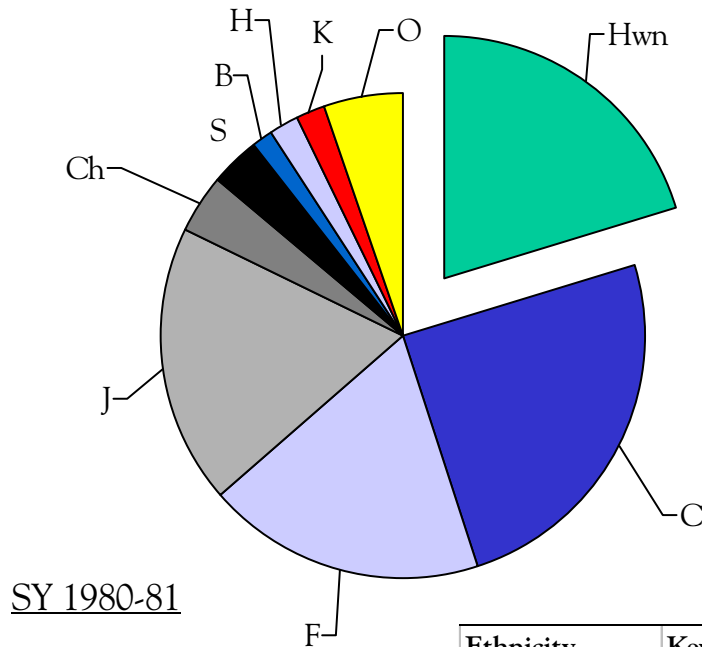


## Trends in Hawaiian Births by County





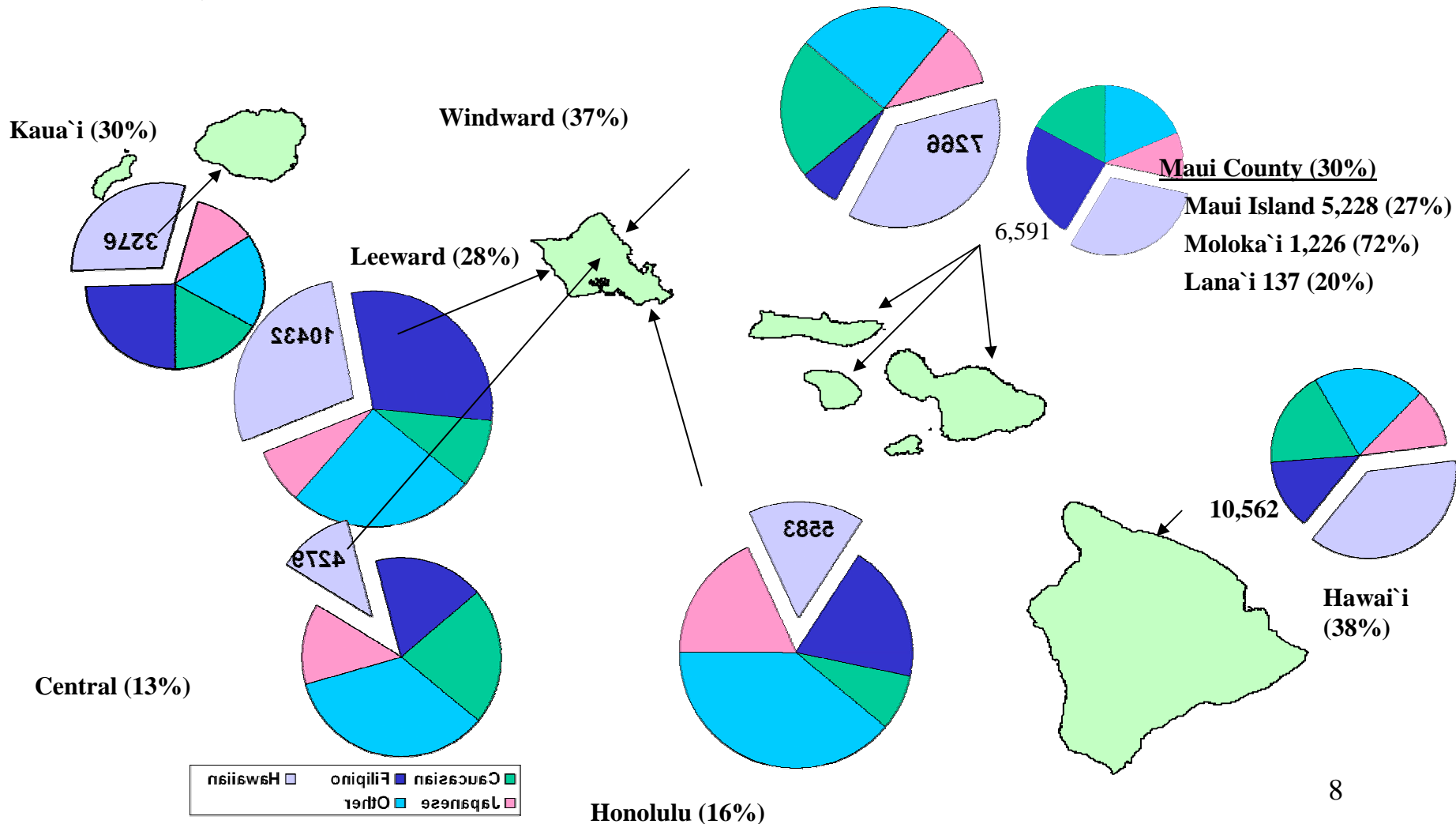
# Ethnicity of Students Enrolled in the Hawai'i DOE: 1980 and 1999



Ethnicity	Key	Number	Percent	Number	Percent
Hawaiian	Hwn	33,423	20%	47,989	26%
Caucasian	C	40,148	24%	27,666	15%
Filipino	F	30,704	19%	36,357	20%
Japanese	J	30,724	19%	21,612	12%
Chinese	Ch	6,232	4%	5,839	3%
Samoan	S	5,327	3%	6,441	3%
Black	B	2,279	1%	4,386	2%
Hispanic	H	3,307	2%	8,493	5%
Korean	K	3,031	2%	2,786	2%
Other	O	8,759	5%	23,111	12%
Total Enrollment		163,934	100%	184,680	100%



# Ethnicity by Hawai`i DOE District, 1999-2000







## Hawaiian Student Population in Hawai`i, School Year 1999-2000

	Total	Est. Hawaiian		% Hawaiian	
	Enrollment	Low	High	Low	High
DOE Schools <sup>1</sup>	184,680	48,000	60,000	26%	32%
Private Schools <sup>12</sup>	32,102	8,000	10,000	25%	31%
Home Schools <sup>3</sup>	3,407	850	850	25%	25%
Total	220,189	56,850	70,850	26%	32%

Notes:

<sup>1</sup>Based on self-identification with only one race/ethnic group allowed. Previous experience suggests actual number could be as high at 60,000

<sup>2</sup>Estimate based on survey data from 1981, 1993 and 1999.

<sup>3</sup>Home Schooling data as of 11/98. Assumes Hawaiians continue to be represented in the Home School population at the same rate as in 1992.



## Summary

- The Hawaiian population is rapidly growing and increasingly diverse
- A significant number of Hawaiians live outside the state
- It is a relatively young population
- Hawaiian students make up somewhere between one-fourth and one-third of the school-age population in Hawai`i