

Keauhou Bay is the birth site of Kauikeaouli, who would become Kamehameha III. Keauhou Bay is well-known for its rich cultural resources, ocean recreational activities, and resort quality environment.

The bay is heavily utilized by a diverse range of users. Kama’āina and visitors alike frequent the birth place of the ali’i.

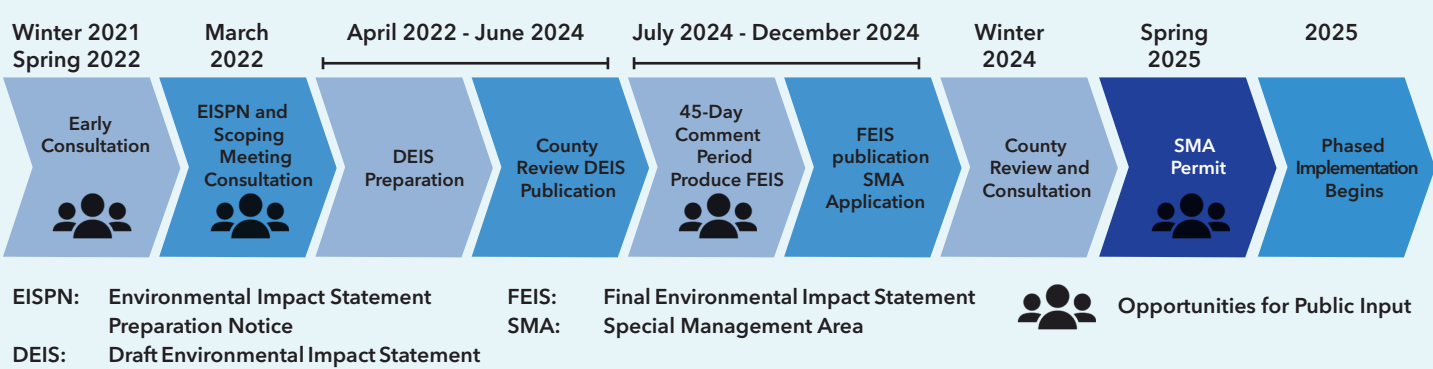
*He aupuni palapala ko’u.
Mine is a literate nation.*

*Ua mau ke ea o ka ‘āina i ka pono
The life of the land is perpetuated in
righteousness.*

-na Kauikeaouli

Implementation of the Keauhou Bay Management Plan (KBMP), requires compliance with State and County laws and administrative rules related to the management, use, and protection of coastal lands surrounding Keauhou Bay. A Special Management Area (SMA) permit is a management tool that ensures activities proposed within the KBMP meet the objectives and policies established for: recreational and historic resources; beach protection; marine resources; scenic and open space resources; coastal ecosystems; and appropriate development.

The application for an SMA permit requires that Kamehameha Schools complete the State Environmental Review Process, commencing with the preparation and review of an Environmental Impact Statement (EIS). An EIS determines if the proposed actions have any significant environmental impacts. The environmental review process includes opportunities for community input as presented below.





The community consultation process for the Keauhou Bay Management Plan was held between 2016 and 2018. Since the 2018 KBMP, community consultation efforts resumed in 2022 and 2023 in preparation of the Draft EIS.

- Keauhou Kūpuna
- Daughters of Hawai’i
- Cultural Descendants
- Commercial Operators
- County of Hawai’i Mayor’s Office
- County of Hawai’i Planning Department
- Elected Officials
- Educational Users
- He’eia Bay Forever
- Keauhou Bay Area Residents
- Outrigger Kona Resort & Spa
- Recreational Users
- Royal Order of Kamehameha

Next steps in 2024 include the Draft EIS Publication, comment period and preparation of the Final EIS. The preparation of the SMA permit application will begin following the Final EIS publication.

If you have questions, please contact us at keauhoubay@ksbe.edu or visit our website http://www.ksbe.edu/keauhou_bay


Kamehameha Schools
Kamehameha Schools’ mission is to fulfill Pauahi’s desire to create educational opportunities in perpetuity to improve the capability and well-being of people of Hawaiian ancestry.

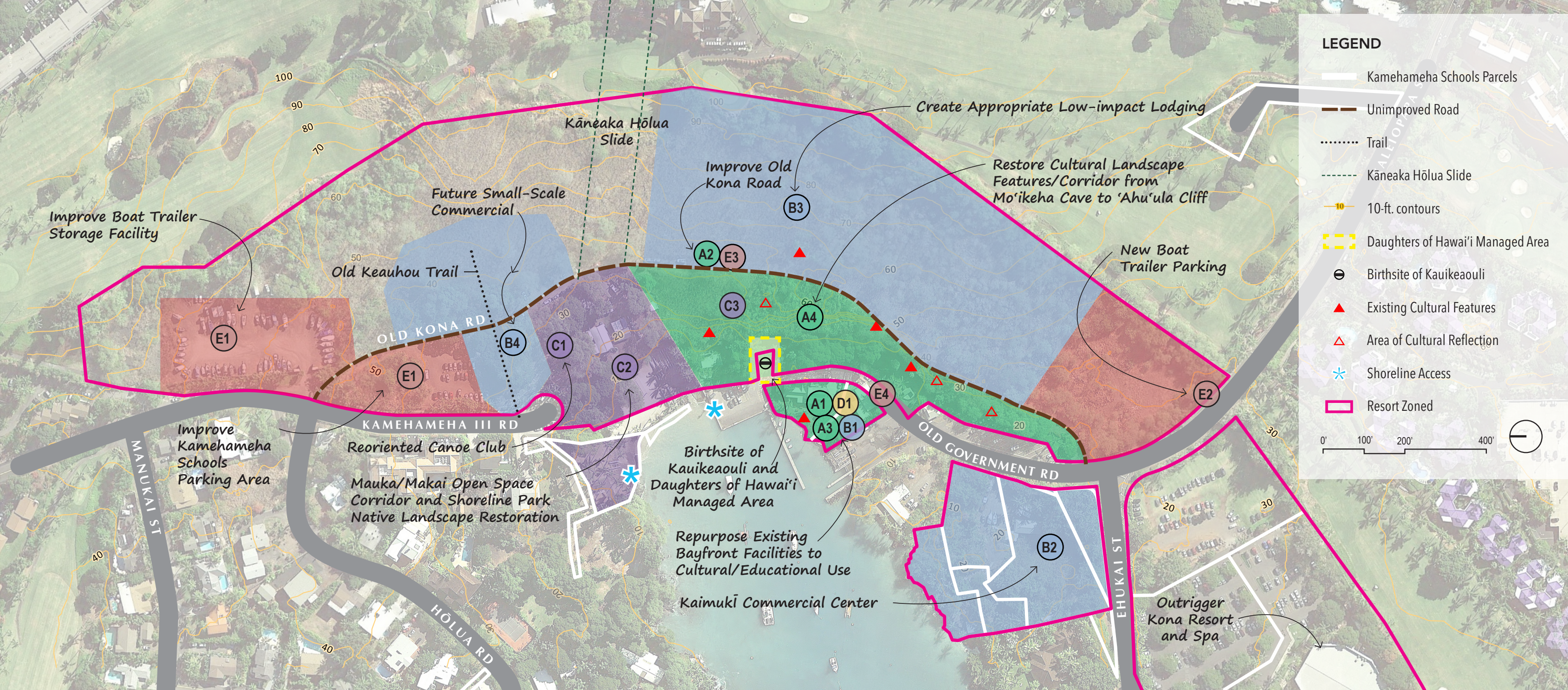

Kamehameha Schools

Keauhou

KEAUHOU BAY MANAGEMENT PLAN

GOALS

- Realign focus of place-based cultural stewardship to the history and legacy of the bay.
- Enhance and encourage bayfront access and recreational use for kama’āina and kupa’āina.
- Improve revenue generation options in appropriate locations.
- Promote high quality collaborative educational experiences for kama’āina, kupa’āina, residents, visitors, and students.



KEAUHOU BAY MANAGEMENT PLAN RECOMMENDATIONS

A	Establish a Heritage Management Corridor	B	Reposition & Develop Commercial Bayfront Areas and Appropriate Density Resort Area	C	Reorient Recreational and Community Use	D	Maintain and Establish New Place-based Cultural Educational Areas	E	Manage Vehicle, Boat and Pedestrian Circulation & Wayfinding
A1	Relieve commercial /vehicle congestion away from wahi pana.	B1	Relocate existing commercial operators away from culturally sensitive areas.	C1	Improve public access by establishing a Mauka/Makai Corridor.	D1	Repurpose existing Bayfront facilities to support educational programming with a community collaborator.	E1	Improve boat and vehicle parking on north side of Bay.
A2	Re-establish old Kona road as main vehicle thoroughfare.	B2	Organize providing the opportunity for the ocean rec to relocate into a new facility.	C2	Expand Ka'ili'ilinehe Beach Park as the entry to an open space, Shoreline Corridor.	D2	Cultivate community collaborator capacity to include Bay area management & community-based economic development.*	E2	Alleviate congestion by exploring opportunities with DLNR/DOBOR on potential relocation/expansion of boat trailer parking.
A3	Repurpose existing commercial facilities to culture/ education to reduce impact in corridor.	B3	Create sustainable, low rise, low-impact lodging on resort-zoned upper plateau of Bay area.	C3	Consider open space and walking path above 'Ahu'ula Cliff to ensure protection of view planes and culturally significant areas.			E3	Re-establish old Kona road to relieve vehicular congestion at Bayfront in heritage corridor.
A4	Restore Cultural Landscape and extend pedestrian friendly walking path along 'Ahu'ula Cliff to Mo'ikeha Cave.	B4	Explore opportunities for commercial kīpuka where appropriate.					E4	Explore access management opportunities with Hawai'i County & DLNR to address traffic and deliveries at Harbor/Pier.
								E5	Organize active commercial/resort uses to the south side, and community/recreational use to the north side.*
								E6	Implement a comprehensive wayfinding & interpretive signage plan.*