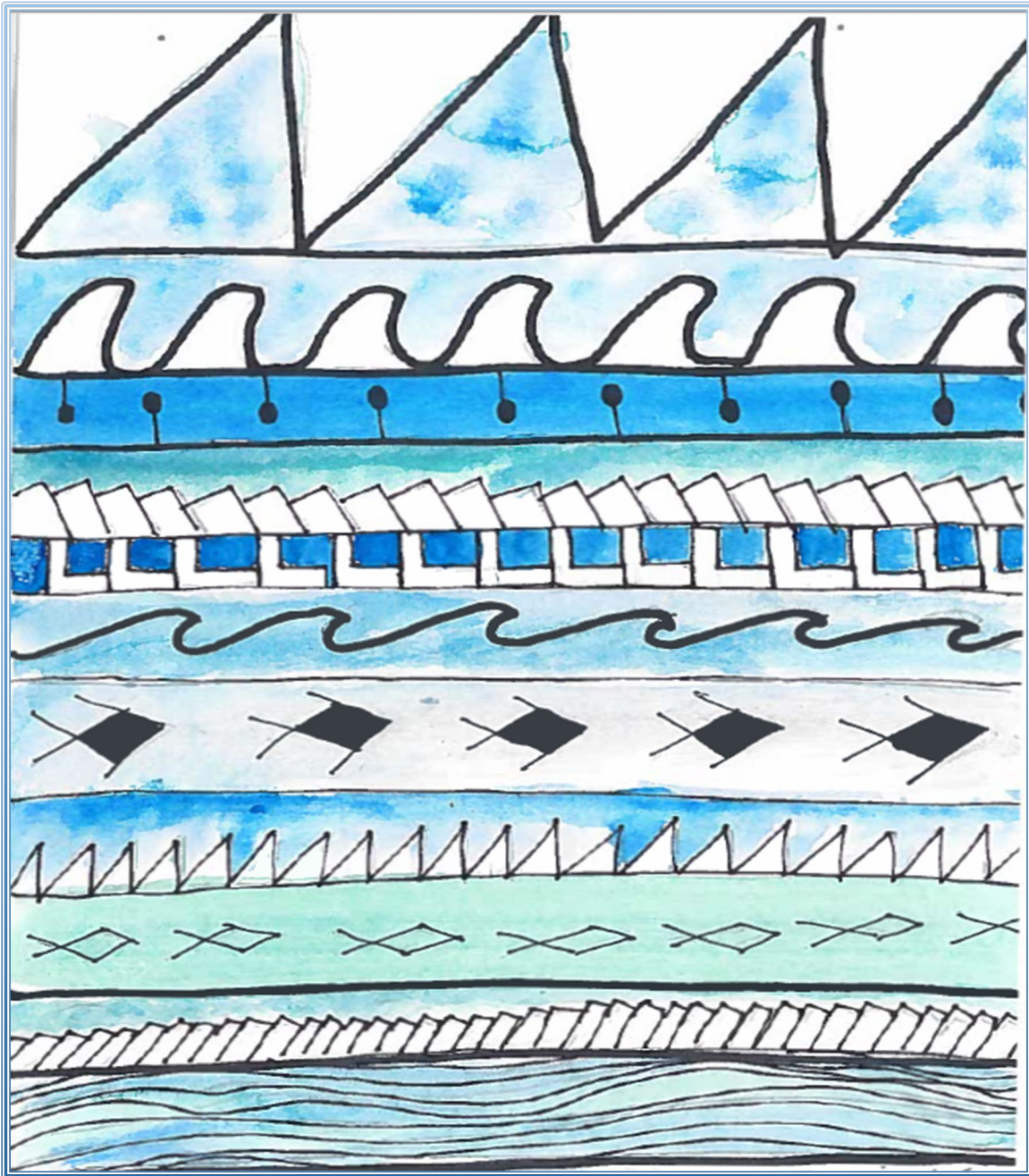




Kamehameha Schools®

# KAMEHAMEHA MIDDLE SCHOOL - KAPĀLAMA



Cover Art *Aloha 'Āina: Waikiki* by Tewairua Kalama, Class of 2026

## CATALOG OF COURSES 2021-2022



## Kamehameha Schools®

### **ADMINISTRATION**

Dr. Taran Chun, *Po'o Kula*

### **BOARD OF TRUSTEES**

Lance Keawe Wilhelm, Chairman of the Board

Robert K. W. H. Nobriga, Vice Chairman

Elliot Mills, Secretary/Treasurer

Micah A. Kāne

Crystal Kaulani Rose

### **CHIEF EXECUTIVE OFFICER**

Livingston "Jack" Wong, Esq.

---

### **KAMEHAMEHA SCHOOLS KAPĀLAMA MIDDLE SCHOOL**

#### **ADMINISTRATION**

Kula Gaughen-Haili, *Principal*

Kēhau Glassco, *Vice Principal*

Arianne Chock, *Interim Vice Principal*

Stacey Makanui, *Dean of Student Well-Being*

Tory Watanabe, *Student Activities Coordinator*

Hoku Hoohuli, *Office Administrator*

#### **SCHOOL COUNSELORS**

Tiffany Kanahale

Trent Koide

Haylee Rezentos

Kimo Saito

# KAPĀLAMA MIDDLE SCHOOL

## CATALOG OF COURSES

### 2021-2022

#### TABLE OF CONTENTS

Philosophy of Education .....	1-2
Values Statement, Vision, and Mission .....	3
Guiding Principles .....	4
E Ola! .....	5
Tri Campus Tactical .....	6
Kaleilamakū .....	7
Overview.....	8-9
Pahu as a Vision .....	10
Ka Ulu Aloha/Team Overview .....	11-12
Middle School Program: .....	13
Core Classes:	
• ‘Epekema [Science] .....	14
• Makemakika [Mathematics] .....	15
• Pelekānia [English] .....	16
• Pilikanaka [Social Studies].....	17
• Mākau/Ola Kino [Physical/Health Education].....	18
• ‘Ōlelo Hawai‘i [Hawaiian Language] .....	19
Overview of Nā Papa ‘Īna‘i [Electives]: .....	20
• Performing Arts.....	21-23
• Fine/Applied Arts .....	24
• S.T.E.M. ....	25-26
• Christian Education .....	27
Mauli Ola [Character Education]: .....	28
• Advisory	
• Christian Education	
• Guidance	
Course Planning Worksheet.....	29-30

# KAMEHAMEHA SCHOOLS

## Philosophy of Education, Values, Mission & Guiding Principles

*'O ke kahua ma mua, ma hope ke kūkulu.*

The foundation comes first and then the building.

Learn all you can, then practice.

*Mary Kawena Pūku'i, 'Ōlelo No'eau: Hawaiian Proverbs and Poetical Sayings*

### PHILOSOPHY OF EDUCATION

The belief statements of the Philosophy of Education that follow are inspired by our beloved Ke Ali'i Pauahi and are based on sound educational principles. This philosophy provides the foundation upon which Kamehameha Schools builds its educational practices.

***We believe that Kamehameha Schools as a Hawaiian institution and its learners<sup>1</sup> have a responsibility to practice and perpetuate 'Ike Hawai'i as a source of strength and resilience for the future. Therefore, Kamehameha Schools will:***

- Foster pride in the Hawaiian culture, language, history and traditions that serves as its foundation.
- Integrate 'Ike Hawai'i into its educational programs and services.
- Provide the necessary learning opportunities, resources and training to deepen the understanding of 'Ike Hawai'i.
- Strengthen the relationship and the responsibility of its learners to the 'āina, its resources and traditions.

***We believe that every learner possesses a unique combination of talents, abilities, interests and needs, and that each individual is able to achieve higher levels of excellence. Therefore, Kamehameha Schools will:***

- Acknowledge the uniqueness of each learner.
- Assist each learner in achieving core understandings and skills.
- Offer enrichment opportunities to encourage each learner to develop individual talents and interests.
- Strive to be available and affordable to encourage broad participation of the learning community.

***We believe that the earliest years of a child's life are the most critical to development and set the stage for future learning. Therefore, Kamehameha Schools will assist by providing early childhood educational services that support families as the primary educators of their children.***

<sup>1</sup> Learner in the context of this Philosophy of Education refers to people of all ages participating in the full range of Kamehameha programs.

***We believe that positive and nurturing relationships are an essential foundation of learning. Therefore:***

- All members of the Kamehameha community that includes learners, staff, families and alumni are role models and will demonstrate attitudes and behaviors consistent with Hawaiian and Christian values.
- All will develop and support positive connections and interactions with learners.

***We believe that all learners create meaning by building on prior knowledge, actively using their learning in personally relevant ways, and contributing positively to the global community. Therefore, Kamehameha Schools programs will:***

- Support the learning process through a diverse and integrated curriculum and a range of services that are enhanced by the use of relevant technologies, real-life connections, and authentic experiences.
- Encourage learners to use their learning in service to their 'ohana, the community, and the world.

***We believe that the quality of instruction is enhanced by collaboration, professional development, and the application of research-based practices. Therefore, Kamehameha Schools will:***

- Provide time and resources for professional development and collaboration.
- Support and engage in research and evaluation activities to improve the quality and effectiveness of education.
- Extend professional development opportunities to its learning communities.

Additionally, each member of the learning community will commit to ongoing professional development and collaboration to optimize learner success.

***We believe that education is enhanced by involvement of the learner and all members of the learner's community. Therefore, Kamehameha Schools programs will:***

- Provide opportunities for learners to share in and assume greater responsibility for their own development.
- Promote the active involvement of families.
- Encourage open communication and seek input from those impacted.

***We believe that the effectiveness of our institution in meeting its mission is enhanced by collaboration and partnerships. Therefore, Kamehameha Schools will:***

- Recognize and encourage the good works of other programs and institutions.
- Contribute to building a network of services to meet the life-long educational needs of Hawaiians.

# VALUES STATEMENT

*Nui ke aloha o Pauahi i ke Akua, kona po'e Hawai'i, ka 'imi na'auao 'ana a me ka mālama 'ana i nā mea pono o kona lāhui.*

*Ua 'ike pono 'o Pauahi i ka nui o kona waiwai ma ka honua a me ke kuleana i kau 'ia ma luna ona. 'O kēia ka mana'o pono no ka 'ohana Kamehameha e ho'omau i ko Pauahi kuleana me ka ha'aha'a a me ka hana pono.*

*'Ihi'ihī ke aloha o Pauahi i ke Akua a me Kona mea e piha ai.*

*Great was Pauahi's love for God and the Hawaiian people, whom she served. Because she valued the pursuit of knowledge, she believed that education would be the key to their well-being. Pauahi was blessed with much worldly wealth and understood that this blessing was accompanied by profound responsibility. Therefore, it is fitting for the Kamehameha Schools 'ohana, called upon to carry her legacy forward, to humbly do so through good thoughts and deeds that reflect the values of stewardship in her Will.*

Kamehameha Schools is grounded in the Christian and Hawaiian values embraced by Ke Ali'i Pauahi. *Aloha*, love and respect for the Lord, our natural world, and one another, is our foundation. *'Imi na'auao*, the quest for knowledge and enlightenment, is essential for an educational institution such as Kamehameha. *Mālama*, caring for one another and all aspects of Pauahi's legacy, will enable our institution to flourish. *'Ike pono* urges us to integrate our intellect and our intuition. *Kuleana* denotes the responsibilities, which accompany our blessings. Let us *ho'omau*, persevere, with *ha'aha'a*, humility, in all that we do.

## VISION

Kamehameha Schools is a dynamic and nurturing learning community committed to educational excellence. We assist people of Hawaiian ancestry to achieve their highest potential as "good and industrious men and women." We do so by contributing to their development as people who are:

- ◆ grounded in spiritual and Christian values;
- ◆ intellectually, emotionally, and socially self-reliant;
- ◆ resourceful, resilient, life-long learners;
- ◆ equipped with the skills they need to succeed in endeavors of their choosing;
- ◆ responsible, ethical, contributing members of their multi-cultural and diverse communities;
- ◆ prepared to practice and perpetuate the Hawaiian values and traditions of Ke Ali'i Pauahi.

## MISSION

Kamehameha Schools' mission is to fulfill Pauahi's desire to create educational opportunities in perpetuity to improve the capability and well-being of people of Hawaiian ancestry.

# GUIDING PRINCIPLES

- ◆ **Kamehameha Schools will honor Pauahi's sacred trust.** Ke Ali'i Pauahi established this institution on the foundation of her Christian beliefs, cultural pride and love for her Hawaiian people. The values of our Founder will guide our policies, programs, and behavior.
- ◆ **Kamehameha Schools will think inclusively as we serve people of Hawaiian ancestry.** Pauahi's love and concern for the well-being of her people knew no bounds. We will extend our geographic reach and serve a wider spectrum of educational needs.
- ◆ **Kamehameha Schools will develop and operate our educational programs and services as a system.** Our educational initiatives will address the multiple learning needs of students of all ages. Programs and resources will be integrated and managed to achieve maximum benefits.
- ◆ **Kamehameha Schools will establish alliances to address the educational needs of people of Hawaiian ancestry.** We recognize that more can be achieved by working with others and will do so in a manner that respects and builds upon their unique and profound strengths. We will partner with those who share our values and goals.
- ◆ **Kamehameha Schools will regard our 'ohana as a precious resource.** We will treat each other with respect, nurture expertise and talents, and recognize the contributions of all.
- ◆ **Kamehameha Schools will stand accountable for our words and deeds.** All those touched by Pauahi's legacy have special responsibilities. We will maintain respectful, two-way communication at all levels. Inclusive decision-making will be practiced.



KAMEHAMEHA SCHOOLS®

# E Ola! Learner Outcomes

Haumāna will become local and global servant leaders who are culturally engaged and play significant roles in creating strong 'ohana and communities throughout ka pae 'āina o Hawai'i and beyond.

The metaphor of a Native Hawaiian forest conveys Kamehameha's learner outcomes needed to achieve these goals. Students are likened to the array of plants thriving in fertile 'āina—diverse individuals with unique talents nurtured by common experiences inherent in a Kamehameha Schools education.

Roots provide constant nourishment and are the **LEARNERS' STRONG FOUNDATION.**

**'Ike Kūpuna**

Ancestral experiences, insights, perspectives, knowledge, and practices

**Aloha 'Āina**

Hawaiian patriotism; love for the land and its people

**Kūpono**

Honorable character founded on Hawaiian and Christian values

The Trunk and Branches draw their substance from the roots and form the **LEARNERS' NATIVE HAWAIIAN IDENTITY.**

**Mālama and Kuleana**

Social agency, community consciousness

**Alaka'i Lawelawe**

Servant leadership

**Kūlia**

Excellence

Leaves spring from the branches and embody the **LEARNERS' PRODUCTIVE COURSES of ACTION.**

**Academic Competence**

**Growth Mindset**

**Self-efficacy**

**Problem Solving**

**Innovation and Creativity**

**Collaboration**

**Global Competence**

Fruits are not only the result, they are also the seeds that perpetuate the vibrancy of the forest, the **LEARNERS' WELL-BEING** and the well-being of the contexts in which they live.

**E Ola! (Live on!)**

Students cultivate their own well-being—cultural, spiritual, social, economic, physical, emotional, and cognitive—so they can thrive and help to ensure the vibrancy of their 'ohana, community, ka lāhui Hawai'i, ka pae 'āina o Hawai'i, and ka honua.



# TRI-CAMPUS TACTICAL PLAN

Kamehameha's educational leaders have identified four key tactics that are the unifying focus for the tri-campus system. These tactics will guide KS to becoming a world-class, Hawaiian-based education system:

**Student-centered learning:** Nā Kula 'o Kamehameha will refocus learning through student-centered, culturally rich experiences and opportunities inspired by students' unique interests and talents, preparing each student to meet their highest potential through diverse academic, athletic, artistic, and co-curricular programs and by leveraging media, technology, and community partners, including the network of Native Hawaiian schools. Subtactics include personalized learning, career and college mindset, and student health, safety, and well-being.

**Empower educators:** Nā Kula 'o Kamehameha will recruit, develop, and retain world-class educators who employ nurturing and dynamic teaching methods to motivate learners to attain world-class outcomes. KS will promote high expectations for its educators, empowering them to produce rigorous, relevant, and relationship-rich Hawaiian culture-based education learning environments. Teachers will strengthen their practice by engaging in professional learning opportunities and developing Hawaiian culture-based education instructional strategies to promote personalized learning that inspires higher learning and performance results for students.

**Elevate standards:** Nā Kula 'o Kamehameha will adopt world-class curriculum, and set student achievement benchmarks and global standards via World-Class Hawaiian Culture-Based Education. Subtactics include promoting WCHCBE, developing the E Ola Koa Student Indicators, and advancing Christian values and Hawaiian culture. We are committed to high-quality standards and student learning outcomes that together define learner pathways and educational excellence. Using discipline-specific national standards, we will provide the highest quality educational programs designed to prepare every graduate to be ready for subsequent post-high college and career opportunities and challenges.

**Redefine systems and learning environment:** Nā Kula 'o Kamehameha will adopt policies, procedures and a governance model to establish responsibility and accountability for leadership, faculty, and staff toward achieving high-level student outcomes. Subtactics include governance that clarifies accountability and autonomy, planning for student learning improvements, and participation in Kaneaokana, a network of Native Hawaiian schools.

*Source: Tri-Campus Tactical Plan, 2016*

# Lift the Haumāna to Lift the Lāhui!



**Kamehameha Schools Mission** is to fulfill Pauahi's desire to create educational opportunities in perpetuity to improve the capability and well-being of people of Hawaiian ancestry.

**Kūhanauna: Strategic Vision 2040:** Within a generation of twenty-five years, we see a thriving Lāhui where our learners achieve post secondary educational success, enabling good life and career choices. We also envision that our learners will be grounded in Christian and Hawaiian values and will be leaders who contribute to their communities, both locally and globally.

**Tri-Campus Educational Tactics:** Student-Centered Learning, Empower Educators, Elevate Standards, Redefine Systems and Learning Environments.

**Kaleilamakū: Kapālama's Roadmap:** Inspiring our haumāna to hō'ola lāhui! Empowering our haumāna to be faithful, culturally-grounded 'ōiwi leaders who use their agency to contribute to a thriving lāhui and influence the world in diverse and dynamic ways.

---

# OVERVIEW

Our KSKMS program is focused on innovation in learning through interdisciplinary experiences to develop the whole child. Grounded in a foundation of Christian values and Hawaiian culture, our program is aligned to essential curriculum and specific organizational goals to improve learning while fostering students' passions. Keeping the needs of the middle school student in mind, student choice coupled with expected learning outcomes determine the direction of each student's path towards success.

The seventh and eighth grades of the Kamehameha Secondary School officially became the Kamehameha Middle School in July of 2001. Located between the Elementary and High School divisions on the 600-acre Kapālama campus, the 640 middle school students occupy two major buildings and a PE facility.

The Middle School has a faculty and staff of about 94, consisting of teachers, counselors, staff and administrators. Each of these adults has high expectations for the students' academic performance and appropriate student behavior. They help students to practice doing what is right (*Ke Ala Pono*) at all times. Thus, Hawaiian values, character education, and service-learning, are integral parts of the school's total curriculum. Proper conduct both on and off campus is expected of all students.

One of our goals is to ease the transition from elementary school to middle school to high school. Being in middle school has its own challenges, as our young adolescents question, ponder and explore the ever-changing world around them. Understanding what is happening to their physical, emotional, social, and spiritual self can be confusing at times. It is important that school and home work together to create an environment that provides stability, structure, as well as a dose of flexibility, which is needed to allow students the opportunity to grow to their full potential.

The middle school model advocates building a sense of belonging and community. A strong emphasis is placed on teaming. There are eight teams, four at each grade level. Each team consists of about 80 students that are assigned the same 'Ōlelo Hawai'i, science, social studies and English teachers. Kumu collaborate together to create units that incorporate multiple disciplines to give students the opportunity to synthesize their learning. Interdisciplinary units provide motivation, student engagement and achievement.

Our One-to-One (1:1) Learning Program offers every student an expanded set of new learning opportunities for both collaborative and self-directed learning. With a personal laptop available to them at all times, every student will be able to: possess an integral learning tool to gain the 21st century skills required to excel and compete globally; be empowered by and engaged with the curriculum; increase his/her knowledge and understanding of technology; and become constructors and designers of information and ideas.

Resources are available in our Learning Center and Innovation Labs providing critical elements for a quality learning environment. Through direct instruction students utilize available resources to integrate quality educational experiences and the design thinking process.

The middle school model builds positive relationships between students and teachers. The middle school team fosters a “small school” feel which includes an advisory. Advisory provides opportunities to build meaningful relationships with peers and an adult advocate, supporting each student’s academic progress and adjustment to school and life.

Our middle school takes pride in providing an environment that encourages the creativity and curiosity of our students. We are excited for your child to learn in our open learning facility that supports the innovations of future century learning, middle school promising practice, and Hawaiian epistemology. (Hawaiian understanding of knowledge).

We are committed to beginning everyday as a kaiāulu. We start the day together with a wehena (opening) and end the week with a panina (closing) as a way to build relationships and affirm ourselves as a kula Hawai‘i (Hawaiian school). Wehena/Panina are held at Kaiona, the piko (center) of our KSKMS campus. The protocol that we have established at KSKMS includes pule (prayer), oli (chanting), mele (singing), and sharing of a mana‘o (message) that is inspired by a Bible verse, ‘ōlelo no‘eau (wise saying), or current event.

The most successful students have parents and families involved in their education. There are multiple opportunities for us to develop this collaborative relationship. Parents are encouraged to have discussions with their keiki about what they have learned that day in school, check KS connect for updated grades, progress reports and volunteer at any of our school functions. We encourage our families to engage in this partnership, as we work together to promote, nurture, and foster the growth of our young adolescents.

Non-graded course requirements include Christian Education, Guidance classes, and clubs as well as participation in special events such as the mandatory Founders’ Day Programs. Our entire school (K-12) honors our beloved Founder, Bernice Pauahi Bishop, on her birthday, December 19th. Her husband, Charles Reed Bishop, founded the 7th and 8th Grade Preparatory Department at Kamehameha, and we pay tribute to him on his birthday, January 25th.

Kamehameha Schools maintains a policy of offering enrollment/admissions preference to Hawaiian students to the extent permitted by law. The Internal Revenue Service has ruled that this policy is non-discriminatory. Kamehameha Schools is in compliance with the Americans with Disabilities Act.

# PAHU AS A VISION

## KSKMS MISSION

Inspiring our haumāna to hō'ola lāhui.

## KSKMS GOAL

Our goal is to provide experiences and moments that inspire our haumāna to find their passion and purpose.

## KSKMS VISION

When a student journeys from Kamehameha Schools Kapālama Middle School, his/her inner voice has been nurtured and is now more resilient, recognized and appreciated for its own strength and quality.

Every child we work with is in a different space in his/her life. Some will sing and sound as they leave, some only managing the first whisper of their greatness.

None will leave voiceless or untouched. Until he/she can sing and sound on his/her own, someone will be there to support him/her.

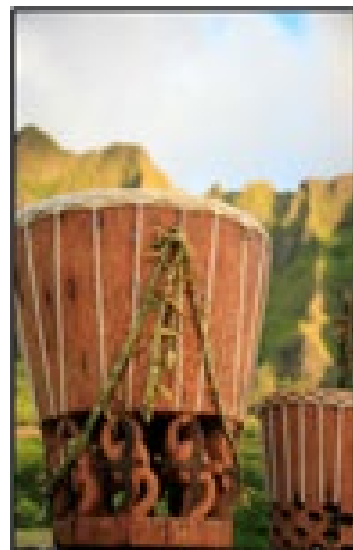
## METAPHOR

A pahu represents, and is a reflection of, excellence.  
*As this is with each child,*

The hidden part of the pahu is a resonating chamber, defining the quality of the voice.  
*As is true with each child,*

What you start with has imperfections, wounds...things brought from the environment.  
*So true of each child,*

Lashing the pahu helps define the voice. Once lashed, there is continuous adjustment to transform the voice with subsequent new resonance.  
*...and so must we with each child.*



# ***Ka Ulu Aloha***

(To inspire with love)

## **7TH GRADE TEAMS**

Team names symbolize characteristics necessary to begin this season of learning as represented in the integrity of the *koa*, flexibility of the *'ohe*, resilience of the *lehua*, and the commitment of the *olonā*.



### **Pū'ulu Koa**

The *koa* symbolizes integrity. Many years are invested in the maturity of the *koa* and its worth grows with its maturity. The Hawaiian value associated with *koa* is *hō'ihī* (respect). Integrity grows out of respect for self and others, and knowing what is right and doing it. We envision a community of respectful learners who develop into people of integrity.



### **Pū'ulu 'Ohe**

The *'ohe* symbolizes flexibility. When blown by the strongest winds, the *'ohe* sways and bends without losing its "rigid" form. The Hawaiian value associated with the *'ohe* is *ha'aha'a* (humility). A flexible attitude develops within as a result of learning to give and take, and bend and sway in challenging situations. We envision a community of flexible learners who develop into humble people.



### **Pū'ulu Lehua**

The *lehua* symbolizes resilience. The *lehua* has the ability to plant itself in opposing conditions and is one of the first trees to grow on new *lava* flows. The Hawaiian value associated with the *lehua* is *ho'omau* (perseverance). We envision a community of resilient learners who persevere in all situations.



### **Pū'ulu Olonā**

The *olonā* symbolizes commitment. The bark of the *olonā* continues to be highly valued by Hawaiians because of its strong, durable nature. The Hawaiian value associated with the *olonā* is *kuleana* (responsibility). We envision a community of dedicated learners that uniquely contribute to the well-being of the *lāhui* (Hawaiian population).

## 8TH GRADE TEAMS

Team names are taken from native hard wood trees. The names of the trees characterize different forms of light that are embodied in a flickering flame (*kukui*), glowing reflection of the sun or moon (*lama*), flash of lightening (*kauila*), and the lasting light of knowledge (*olopua*).



### Pū'ulu Kukui

The *kukui* symbolizes the light of wisdom that is the practical application of knowledge. Confidence stems from wisdom. The Hawaiian value associated with the *kukui* is *na'auao* (wisdom). We envision a community of confident learners who apply their knowledge and make wise choices in their life.



### Pū'ulu Lama

The *lama* reflects caring for one another. The translation of Kapālama is "the enclosure made of lama." Within this enclosure we learn to care for others and ourselves. Boundaries and guidelines help to keep us safe and on task in our learning environment. The Hawaiian value associated with the *lama* is *mālama* (to care for one another, preserve, and protect). We envision a community of caring learners who receive and give guidance.



### Pū'ulu Kauila

The *kauila* represents the light of excellence. Capable minds and skillful hands yield excellent works. From the skillful hands of a carver, *ihe* (spear), *pāhoa* (dagger), *hohoa* (*kapa* beater), *ō'ō* (farming/digging stick), *'auamo* (carrying stick), and *kua kuhu* (anvil) were shaped. The Hawaiian value associated with *kauila* is *po'okela* (excellence). We envision a community of learners that seek excellence in all endeavors.



### Pū'ulu Olopua

The *olopua* symbolizes the burning desire one has to affirm their identity as an *'ōiwi Hawai'i* (native Hawaiian). *Olopua* is a hard and durable wood that is dense and heavy. It is also used as firewood and presents a hot flame even when green. The Hawaiian value associated with the *olopua* is *'ike pono* (enduring understanding). We envision a community of learners that integrate their intellect and their intuition.

*In 2002, Robin Makua-Luahiwa (KSK '78) is credited for the conception of Ka Ulu Aloha. Robin has taught in the Hawaiian Language and Extension Education Departments of Kamehameha Schools.*

*Robin Racoma, KS graphic artist, created the Pū'ulu icons and Ka Ulu Aloha banner.*

# **Kula Waena**

## **Middle School Program**

Our KSKMS program is focused on innovation in learning through interdisciplinary experiences to develop the whole child. Grounded in a foundation of Christian values and Hawaiian culture, our program is aligned to essential curriculum and specific organizational goals to improve learning while fostering students' passions. Keeping the needs of the middle school student in mind, student choice coupled with expected learning outcomes determine the direction of each student's path towards success.

The chart below shows the required classes every student must take. Our Catalog of Courses provides information regarding our course offerings and requirements.

<b>Required Courses</b>
<b>ENGLISH</b>
<b>MATHEMATICS</b>
<b>SCIENCE</b>
<b>SOCIAL STUDIES</b>
<b>'ŌLELO HAWAI'I</b>
<b>PE [7<sup>th</sup>/8<sup>th</sup>] &amp; Health [7<sup>th</sup>]</b>
<b>CHRISTIAN EDUCATION</b>
<b>GUIDANCE</b>
<b>ELECTIVE</b>



# 'Epekema

## SCIENCE

Science is a way of gaining knowledge and understanding of natural phenomena. With this knowledge, life and living may be enhanced. Kamehameha Middle School Students are expected to engage in the following scientific practices of:

- Planning and carrying out investigations
- Analyzing and interpreting data
- Constructing explanations and designing solutions
- Obtaining, evaluating and communicating information
- Using technology ethically and appropriately

### **Goals include the following:**

- 1) To teach students that science is relevant, fun, and exciting in a comfortable supportive environment.
- 2) To prepare all students to lead productive lives in our scientific/technological society.
- 3) To develop in students the skills of observing, hypothesizing, testing, analyzing, concluding, and communicating.
- 4) To help students develop values and an appreciation of the natural science.
- 5) To provide all students with sufficient science background to succeed in high school.

### **Life Science 7 [KM07102]**

Year, Required for all Grade 7 students.

This course will introduce students to the nature of science and the interactions between organisms and the environment. Students will learn science process skills that will enable them to apply the scientific methods and Engineering Design as they observe the natural world around them. Problem solving activities will prepare students to contribute to society as knowledgeable citizens. Lab activities and middle school concepts will be emphasized throughout this course to prepare students to continue their study of science.

### **Earth Science 8 [KM08102]**

Year, Required for all Grade 8 students.

This course introduces students to the study of the Earth's atmosphere, oceans, and universe of which it is a part. Emphasis is placed on the natural science of Hawai'i and the natural resources that are essential to life in Hawai'i. Students are introduced to the impact that human interactions have on the Earth's environment and its natural resources. Earth science and physical science concepts will be emphasized. Experience with the scientific method, design engineering, usage of materials, and equipment used while conducting laboratory activities throughout this course will prepare students for High School science courses.

# Makemakika

## MATHEMATICS

Middle School's Mathematics Program provides students with opportunities to progress in mathematics to the highest level of their ability. Instilling confidence in our students' capacity to apply mathematics and developing an appreciation of the subject matter are important goals. Students are challenged to engage in activities that require them to apply mathematical problem-solving strategies not only in math, but also to other content areas, as well as real life. The students learn to utilize their math skills effectively, broaden their problem-solving techniques, and enhance their abstract reasoning skills. We seek to build a solid foundation in conceptual learning to ensure success in their higher-level math courses and in their adult life. Summer school may be required of students to assist in preparing them for the following school year.

Students who demonstrate an aptitude for mathematics and enjoy challenges are invited to join our Math Team, which represents Kamehameha Schools Kapālama Middle School in Math Counts competitions.

**At the middle school level, making appropriate and responsible placement decisions for our students is critical for their future success in mathematics. Students will be placed in an appropriate math level (including an option of Advanced Math) based on a pre-assessment.**

### **Mathematics 7 [KM07205]**

Year, Required for all Grade 7 students.

The mathematics program in seventh grade is designed to master pre-algebra standards. The course begins by reviewing and building off of students' mastery of basic computations and applications of fractions, decimals, percents, integers, and gives them practice with rational numbers. The topics include ratios and proportions, solving equations and inequalities, graphing equations and inequalities, and reading and interpreting statistics and graphs. These concepts will build a foundation necessary for eighth grade math.

### **Mathematics 8 [KM08206]**

Year, Required for all Grade 8 students.

The mathematics program in eighth grade is a progression through Algebra I. The curriculum includes learning about simplifying expressions, solving equations and inequalities, substitutions, understanding the nature of graphs, graphing linear equations and inequalities, solving proportions, understanding absolute values, solving and graphing systems of equations, analyzing systems of inequalities, using statistical methods to analyze data, polynomials, and solving word problems.

# Pelekānia

## ENGLISH

In middle school, the study of English includes knowledge of the language itself, use of the language as a means of communication, and appreciation of its artistry as expressed in literature. The use of English involves reading, writing, speaking, listening, thinking, and observing skills for development, which is a lifelong process. In seventh and eighth grades, students are provided with opportunities to improve their understanding and use of the language.

Students will be exposed to literature appropriate to the grade level, and a strong emphasis will be placed on developing their writing skills.

### **English 7 [KM07306]**

Year – Required for all Grade 7 students

Students develop reading skills through exposure to works of fiction and nonfiction, including: short stories, novels, myths, and essays to learn about narrative structure, story plot, conflict, character, and theme. Additionally, students learn about forms and language of poetry. Writing focuses on descriptive, narrative, expository, and persuasive, as well as creative experiences. Literary terms, vocabulary development, grammar, and mechanics are also part of the seventh grade curriculum. All students enrolled in English 7 will be required to complete their summer reading before school begins.

### **English 8 [KM08306]**

Year – Required for all Grade 8 students

Students continue the study of literary genres, including analysis of plot, conflict, character, and theme in short stories, novels, and poetry. Nonfiction selections are also included to aid in the development of increased reading comprehension. The focus of writing assignments is exposition and argumentation as students practice organizing key ideas and supporting their writing with sound evidence. Voice, word choice, sentence fluency, and conventions, in addition to vocabulary development and grammar, are essential components of the writing program. All students enrolled in English 8 will have summer reading requirements to be completed before school begins.

# Pilikanaka

## SOCIAL STUDIES

Middle School Social Studies calls upon haumāna to use the disciplines of civics, economics, geography and history as they (1) develop questions and plan investigations; (2) apply disciplinary concepts and tools; (3) gather, evaluate and use evidence; and (4) work collaboratively to communicate conclusions and take informed action.

### **Social Studies 7 [KM07408]**

Year, Required for all Grade 7 students.

He Hawai'i Au, 'o ia nō ka mea nui ma ka papa Pilikanaka. E ho'onui 'ike ana nā haumāna i ko mākou kūpuna 'ōiwi, nā mo'olelo, nā loina a me ka nohona. E a'o ana nā haumāna i nā mea like 'ole o ka po'e a me ka 'āina o ka Pakipika. Eia ho'i, e kūkākūkā ana lākou i nā nū hou kūloko a kūwaho.

E a'o mai ana nā haumāna i ke ola o Ke Ali'i Pauahi a me kāna kāne 'o Charles Reed Bishop, kāna palapala ho'oilina a me ka ho'okumu 'ana i nā Kula Kamehameha.

He Hawai'i Au (I Am Hawaiian) is the emphasis of ka Papa Pilikanaka. Haumāna will gain 'ike and na'auao about the aboriginal people of Hawai'i, their loina and cultural practices. Learning about the people and culture of Hawai'i, and making connections across the Pacific is the focus of Pilikanaka (Social Studies) during the seventh grade. Additionally, current events will be discussed.

Students will learn about the life of Princess Bernice Pauahi and Charles Reed Bishop, her Will and the establishment of the Kamehameha Schools.

### **Social Studies 8 [KM08408]**

Year, Required for all Grade 8 students.

Social Studies in the eighth grade consists of the study of American History from the first arrivals through to the Civil War. A fundamental goal of this course is to ensure an understanding of the importance of history through multiple perspectives and how events in the past have shaped today's world. Current events will be consistently incorporated into social studies as we look at examples of how the past has impacted our community today. Haumāna will also analyze government structures and explore pathways to civic engagement as they ready themselves to be the 'ōiwi leaders of tomorrow.

# Mākau Kino & Ola Kino

## PHYSICAL EDUCATION & HEALTH EDUCATION

The goal of Physical Education is to develop individuals who have the knowledge, skills, and confidence to enjoy a lifetime of healthy physical activity and wellness.

### **Physical Education 7 [KM07605]**

Semester-paired with Health Education. Required for all Grade 7 students.

### **Physical Education 8 [KM08605]**

Year, Required for all Grade 8 students.

The physical education classes in the seventh and eighth grade are designed to offer fundamental movement skills in a variety of activities that promote fitness and skill development balance of team and individual sport, and fitness development activities. Classroom assignments enhance the knowledge and understanding of movement techniques and strategies.

The curriculum includes active participation in a variety of activities that promote physical fitness, motor skills, and lifetime sports. Instruction centers on learning basic skills, rules, and strategies with an emphasis on teamwork and good sportsmanship.

Physical conditioning and the development of each student's overall fitness is an integral part of the program. Aerobic activities, running and swimming, are included in the program to promote cardiovascular fitness.

### **REQUIRED PURCHASES:**

- Two sets of P.E. uniforms (can be purchased from the school store)
- Two combination padlocks: one for Keawe Gym locker and one for the Kalani'ōpu'u Pool locker
- Swimming attire: one piece swimsuit for girls. Towels will be provided.
- Swimming goggles

### **Health Education [KM07815]**

Semester-paired with Physical Education. Required for all Grade 7 students.

This course is a developmental health education class to assist students in maintaining and improving their overall health. Topics include disease prevention; promotion of positive health-related behaviors; mental/emotional/spiritual health; nutrition; tobacco/alcohol/drug awareness; and sexual health. Class content is developmentally appropriate.

# 'Ōlelo Hawai'i

## HAWAIIAN LANGUAGE

“O Ke Kahua Ma Mua, Ma Hope Ke Kūkulu.”  
-Mary Kawena Puku'i

According to our kūpuna, a strong foundation is needed in order to build cultural and language knowledge. 'Ike ku'una, or ancestral knowledge (i.e. mannerisms, customs, and rules), is critical in deepening the understanding of Hawaiian language. With these thoughts, our program aims to set the basic fundamentals of Hawaiian language aiding in language acquisition and application.

### **Hawaiian 1A [KM07533]**

Year, Required for all Grade 7 students.

Hawaiian 1A emphasizes skills in listening, reading, writing, and speaking so that students can communicate effectively in various situations which range from exchanging greetings to providing information about themselves, family, friends, school, etc. Hawaiian culture is incorporated through this course.

### **Hawaiian 1B [KM08514]**

Year, Required for all Grade 8 students.

This course is a continuation of Hawaiian 1A, expanding on student's skills in listening, readings, writing, and speaking. Upon successful completion of this course students will have the foundational elements to be able to converse lightly in a familiar and everyday context.

### **Advanced Hawaiian [KM08512]**

Year, This course is conducted in Hawaiian, Open to Grade 7 and 8.

Prerequisite: three recent, consecutive years in a Hawaiian language immersion school.

Mālama 'ia kēia papa ma o ka 'ōlelo. In this course, students will apply Hawaiian language skills (reading, writing, listening, and speaking). Students will develop and further advance their Hawaiian language through practical application. We will be practicing through methods, which include but are not limited to: mele and oli, memorization techniques, individual study and group collaboration.

# Nā Papa 'Īna'i

## ELECTIVE COURSES

Elective courses provide an opportunity for students to discover an area of interest and develop or refine skills in a variety of areas including performing arts, visual & applied arts, media, S.T.E.M., and spirituality. Our elective courses enhance our middle school learners' journey as they practice and further develop individual passions, interests, and build productive courses of action such as collaboration, problem solving, innovation, creativity, and self-efficacy.

When selecting an elective, be sure to pay close attention to all the requirements for the course. Offerings listed below are not a guaranteed list and can change based on student demand and teacher availability. All courses are year-long in duration.

Christian Education	Christian Leadership	KM08828
	Papa Himeni: Praise & Worship	KM08829
Performing Arts	Band: Beginning	KM08506
	Band: Concert	KM08507
	Kanikapila	KM08535
	Orchestra: Beginning	KM08513
	Orchestra: Concert	KM08537
	Papa Oli me Hula 1: Beginning	KM08528
	Papa Oli me Hula 2: Intermediate	KM08526
S.T.E.M.	Design Technology	KM08533
	eSports	KM08534
	Industrial Technology	KM07823
	Ka Papa Ka'āmauloa: Perspectives in 'Āina	KM08827
	Robotics: Advanced	KM08602
	Robotics: Beginning	KM08556
Fine/Applied Arts	Digital Mo'olelo	KM08538
	Ka Papa Hana No'eau [Visual Art]	KM08824
	Yearbook/Digital Photography	KM08550

In addition to the course descriptions on the following pages, please feel free to learn about our elective offerings via our KMS Electives website:

<https://sites.google.com/ksbe.edu/kmselectives/>

## PERFORMING ARTS

Music and dance are universal languages. They are common grounds upon which people all over the world can express themselves. Whether as creators, performers, listeners or observers, students are encouraged to explore the realm of the performing arts to enhance the quality of their lives. Students will learn rehearsal and performance etiquette, as well as gain a sense of how their individual work impacts the whole performance ensemble.

Performing arts has always played a major role in the culture of the Hawaiian people, and for over a century, has been a strong tradition at Kamehameha Schools. Students enrolled in performing arts will be able to gain a variety of skills, enjoy a wide range of experiences, and develop a meaningful, lifelong appreciation for the arts.

Note: Performances are used as Summative Assessments in Kula Waena Performing Arts courses. At least one (1) event will serve as the summative performance assessment for each semester. Other performances in support of our school and tied to our curriculum may be identified as mandatory, and therefore reported in the grade. Some performances will be highly encouraged, but not mandatory and/or reported. A list of possible mandatory performances for each program is identified below.

- Semester Hō'ike (All Performing Arts Classes)
- Charles Reed Bishop Founder's Day (All Performing Arts Classes)
- ATP Ho'olaule'a (Papa Oli me Hula)
- Makahiki Performance (Papa Oli me Hula)
- Tournament of Bands (Band)
- Band-O-Rama (Band)
- Parade of Orchestras (Orchestra)
- Ka Lā o Nā Lei Aloha (Kanikapila/Papa Oli me Hula)

There may be rehearsals to prepare for mandatory events. These rehearsals are highly encouraged. Absence from these rehearsals may prevent students from performing well in mandatory events. Performing Arts Faculty will be communicating about rehearsals and performances as necessary.

***\*Some performing arts courses may assess a parent fee.  
Faculty will communicate about that as necessary.***



## **PERFORMING ARTS cont'd**

### **Band: Beginning [KM08506]**

Open to Grade 7 and 8. No prerequisite.

This course is designed for the student who is interested in band and includes woodwinds, brass, and percussion instruments. Students with some prior band experience will continue to develop their skills, while beginning students will choose an instrument and develop foundational skills. A parent signed responsibility contract is required for a KMS-provided instrument.

### **Band: Concert [KM08507]**

Open to Grade 7 and 8. Prerequisite: Completed Beginning Band with passing grade, or two years of band experience.

Students will be challenged with advanced band literature and will be representing the Middle School in public performances listed above. In addition, students enrolled in this course may be asked to perform at the OBDA Parade of Bands. A parent signed responsibility contract is required for a KMS-provided instrument.

### **Orchestra: Beginning [KM08513]**

Open to Grade 7 and 8. No prerequisite.

This course is for students who are interested in learning to play a string instrument (violin, viola, cello, bass). This course will cover the basics of performing as a group, along with learning about music theory. Students will choose an instrument and develop foundational skills. Students in Beginning Orchestra will join students of the Concert Orchestra for some performances. Instruments will be provided through KMS orchestra inventory for students to use during the school year. A parent signed responsibility contract is required for this provided KMS instrument.

### **Orchestra: Concert [KM08537]**

Open to Grades 7 and 8. Prerequisite: At least one full year of prior orchestra experience, or consent of Kumu.

Students will continue to develop their skills through playing a variety of orchestral literature and performing in various performances. Through participation in orchestra, students will learn the basic principles of music, as well as enhancing skills such as commitment, self-discipline, self-esteem, social skills, cooperation, teamwork, and performance and audience etiquette. Instruments will be provided through KMS orchestra inventory for students to use during the school year. A parent signed responsibility contract is required for this provided KMS instrument.

## **PERFORMING ARTS cont'd**

### **Papa Oli me Hula 1: Beginning [KM08528]**

Open to Grade 7 and 8. No prerequisite and recommended for students with 0 - 1 years of hula experience.

All haumāna are encouraged to join! This is a beginning course to Hawaiian Chant and Dance (Papa Oli me Hula). Basic skills, customs, traditions and mo'olelo are covered. 'Ōlelo Hawai'i (Hawaiian language) as it pertains to mele and hula will be interwoven throughout the class. All are expected to attend rehearsals and participate in performances, concerts, activities, and special occasions after hours. Excellence in performance and behavior is expected at all times.

### **Papa Oli me Hula 2: Intermediate [KM08526]**

Open to Grades 7 and 8. Prerequisite: Completed one year Papa Oli me Hula or has 2+ years of hula experience.

This course is a continuation of Papa Oli me Hula 'Ekahi. Haumāna will increase their knowledge and repertoire of mele, hula, and oli. All are expected to attend rehearsals and participate performances, concerts, activities, and special occasions after hours. Excellence in performance and behavior is expected at all times.

### **Kanikapila [KM08535]**

Open to Grade 7 and 8. No prerequisite.

If you love to sing and/or want to learn to play ukulele, this is the course to sign up for! As Hawaiians, we all grow up around the great sounds of our islands. Hawaiian music is admired worldwide! The 'ukulele is known to be one of the simplest acoustic instruments to learn how to play. We will learn to play and sing the songs of yesterday, today, and compose originals for you and your 'ohana to cherish for a lifetime! Kanikapila simply means, let's jam together and make music that will fill us up with joy! A parent-signed responsibility contract is required for a KMS-provided instrument.

## **FINE & APPLIED ARTS**

### **Ka Papa Hana No’eau (Art) [KM08824]**

Open to Grade 7 and 8. No prerequisite.

Hana no’eau can be interpreted as “skilled work”. Traditionally, there was no word for “art” in ‘Ōlelo Hawai’i. Highly skilled and refined handmade artwork was an integral part of nohona Hawai’i/Hawaiian life. The foundation of this class is ‘Ike Kūpuna, Aloha ‘Āina and Kūpono (E Ola!). ‘Ōlelo Hawai’i, oli, pule, mo’olelo and Ioina, will be practiced daily as part of this hands-on course. Haumāna will learn both visual art, and Hawaiian art. Haumāna will learn about artist models from both fields.

Visual art techniques will include: drawing, painting, printmaking and sculpture.

Hawaiian art techniques will include: rock carving, Hawaiian design, and implement making. Student will carve an ‘ulu maika and make several Hawaiian implements. Students will learn appropriate gathering practices, and they will be expected to gather some of their own resources.

### **Yearbook & Digital Photography [KM08550]**

Open to Grade 7 and 8. No prerequisite.

Yearbook and Digital Photography is designed for haumāna to work individually and in teams on the design, photography, layout, editing, and publication of the yearbook for Kamehameha Schools Kapālama Middle School. This student publication gives haumāna the opportunity to learn computer programs and build yearbook pages. Students will also be trained and familiarized with equipment such as a digital camera and other layout materials. Please be aware that a publication such as this requires work before and after school, and time outside of class may be required to meet certain deadlines. In addition, haumāna may need to attend events outside of class such as sporting events and school activities, in order to take necessary pictures for the yearbook. Strong computer and writing skills desired for class.

### **Digital Mo’olelo [KM08538]**

Open to Grade 7 and 8. No prerequisite.

Digital Mo’olelo is a course designed to adapt the important Hawaiian practice of storytelling to the 21st century. Students will be urged to utilize technology to communicate their own stories to their ‘ohana, the lāhui and the entire honua. Along with telling their stories, students will also learn the foundational skills in TV production and music engineering as the digital content will be compiled into Kamehameha Middle School news shows, as students will take turns being the reporters, the camera operators, the directors and the on-air talent.

Students will explore and use technology to support or structure their projects and shows around. In this project-based learning environment, students will take ownership of their own processes and products and the teacher will guide the students through the inquiry process. Throughout the year, students will learn basic technology skills of various media forms to help support the creation of their projects as well as be introduced to a variety of tools to sustain the project’s integrity in perpetuity.

## S.T.E.M.

### **Design Technology [KM08533]**

Open to Grade 7 and 8. No prerequisite.

Are you inspired to become a designer? Then this is the class for you. This is a project-based course that is designed to develop skills in creating prototypes or products, use of computer-aided design/drafting (CADD) programs, and engage with fabricating technologies such as three-dimensional printing and laser cutting. This course will weave Hawaiian knowledge and language into the design process and way of thinking. In addition, students will learn about elements of visual communication through various computer graphic programs.

### **Industrial Technology [KM07823]**

Open to Grade 7 and 8. No prerequisite.

Do you want to learn how to build with wood? Then this is the class for you. This is a project-based course that is designed to develop skills in technical drawings and fabrication through woodworks. This course will weave Hawaiian knowledge and language into the design process and way of thinking. Students will receive instructional skills on the proper and safety use of hand and power tools for woodwork fabrication. In addition, students will learn about elements of visual communication through various computer graphic programs.

### **eSports [KM08534]**

Open to Grade 7 and 8. No prerequisite.

This course will focus on gaming strategies through various platforms like Rocket League and Roblox. Students will have the opportunity to engineer game development and design based on student centered passion and creativity. This course is not about teaching students how to play specific eSports games; it is about showing students how to play any game with the correct posture and behavior. We want to open their eyes to the potential that video games can help them achieve in their lives. It would be nearly impossible for a teacher to know every strategy relating to every game that is being played on the college or professional level.

Teaching the games themselves would be akin to one individual teaching subject matter in math, history, English, business, computers and art. Although the different game types vary so much that any one of them could be taught over the course of a semester and still not be fully understood, the goal remains be help students utilize data and break it down so that they develop and refine analytical, cognitive, and communication strategies.

## S.T.E.M. cont'd

### **Ka Papa Ka'āmauloa: Perspectives in 'Āina [KM08827]**

Open to Grade 7 and 8. No prerequisite

Ka'āmauloa means the thread that continues on forever. It connects our three piko ('i, 'o and 'a) meaning it links our past, present and future together. There is no break in the line and it continues in both directions.

In this course, students will learn about sustainability and 'āina restoration ('ike kūpuna, aloha 'āina). Through student driven inquiry, research and 'āina based learning, students will deepen their cultural identity and better understand their kuleana to 'āina. This knowledge will provide clearer direction in personal explorations as well as a strong foundation as a kanaka 'ōiwi (person of this land). Through exploring their ancestral history and practices, students will have a better understanding of where they come from, where they stand and where they are headed.

### **Robotics: Beginning [KM08602]**

Open to Grade 7 and 8. No prerequisite.

Beginning robotics focuses on personalized learning designing, building, and programming robots. Topics include 3D printers, computer programming and artificial intelligence. Haumāna learn to use design thinking in a project-based learning environment. Communication, collaboration, critical thinking, creativity, culture and identity, and character are all foundations for robotics education. Learn about 1) robotics lab safety; 2) basic math in robotics; 3) job behaviors and workplace etiquette; 4) communication and technical writing; and 5) resource management.

### **Robotics: Advanced [KM08556]**

Open to Grades 7 and 8. Prerequisite: Successful completion of Beginning Robotics, or previous robotics experience

Advanced robotics topics include making prosthetic devices, using artificial intelligence, programming robotics, self-driving cars, and 3D printers. Personalized learning focuses on solving real community problems by applying robotics technology. Communication, collaboration, critical thinking, creativity, culture and identity, and character are foundations of robotics education. Advanced robotics students grow their skills and knowledge in 1) safety; 2) measurement and math; 3) job behaviors, workplace etiquette, and craft; 4) technical writing and drawing; and 5) ethical resource management.

## **CHRISTIAN EDUCATION**

Our Christian Education electives provide an opportunity and venue for middle school students to dive-deeper into their Christian identity, building upon the required Christian Education foundational course all students enroll in. Students in Christian Education electives take their learning and become leaders of our middle school campus through our devotion and chapel services.

### **Christian Leadership [KM08828]**

Open to Grade 7 and 8. No prerequisite.

God has created and equipped “EVERYONE” to be a leader. This course will teach you how to find your God given potential and use it to influence others to strive towards excellence. This course will look into the life of Peter who Jesus said, “You are Peter upon you I will build my church!” In the eyes of many Peter was just an “ordinary” fisherman who the Bible records as someone who made a boatload of mistakes. He had no special education, qualifications, gifts or talents when it came to leadership, yet Jesus used him to build his church!

You may feel just like Peter, an ordinary person with no leadership qualities to offer. This course does not require any leadership experience. This course will teach you how to identify your leadership potential found in the Bible and used by our Ali‘i. You will learn how to identify your gifts and talents and maximize them as you organize, prepare, plan and participate in joint devotions, chapels and other all school functions throughout the school year. Learn how to take ordinary and make it extraordinary!

### **Papa Hīmeni: Praise & Worship [KM08829]**

Open to Grade 7 and 8. No prerequisite.

Do you want to worship Ke Akua through music? This is the course for you! You will learn about and sing hīmeni (hymns) and contemporary mele that guide us spiritually. We will also write and compose hīmeni together. We will offer mele as our makana (gift) to Ke Akua and share it at our KMS Chapel and Devotion services! A parent-signed responsibility contract is required for a KMS-provided instrument.

# Mauli Ola

## ADVISORY, CHRISTIAN EDUCATION, & GUIDANCE

### **Advisory**

Advisory is a small learning community. It is the cornerstone of a successful middle school model that is focused on developing meaningful relationships in a safe and nurturing environment in which each student's academic and personal development is guided by an adult advocate. This approach ensures that every student is connected to at least one caring and responsible adult. In addition to building relationships, students learn key academic and social, emotional and civic skills and dispositions that will support school – and life – success.

### **Christian Education [KM07609, KM08609]**

At Middle School, the basic objectives are to educate and nurture the faith of students in this transitional period between seventh and ninth grade, and to help students establish a foundation from which to build a relationship with God and others. The emphasis is on teaching various doctrines of the Christian faith, characteristics of God, Bible knowledge, and how to be successful in relationships with God and others.

### **Guidance [KM07701, KM08701]**

Through the implementation of a comprehensive school counseling program and with ASCA (American School Counselor Association) guidelines, this class assists students in the academic, social, and college/career domains. Guidance lessons are set up to foster the exploration of each student's unique individual strengths. Awareness of individual strengths can raise student's intrinsic motivation, promote healthy relationships, and assist in planning for their future. School Counselors encourage the following mindsets for all students:

- Belief in development of whole self, including a healthy balance of mental, social/emotional and physical well-being
- Self-confidence in ability to succeed
- Sense of belonging in the school environment
- Understanding that postsecondary education and life-long learning are necessary for long-term career success
- Belief in using abilities to their fullest to achieve high-quality results and outcomes
- Positive attitude toward work and learning

## 2021-2022 KMS Course Planning Worksheet

*This is a planning worksheet which can be kept at home. Registration will occur in KS Connect  
<https://connect.ksbe.edu/>*

Grade 7: c/o 2027: 1 yearlong course [1.0 credit]

Grade 8: c/o 2026: 1 yearlong course [1.0 credit]

Please see example below: Make a copy to create your own.

Rank	Course Number	EXAMPLE	Credit
Primary	KM08550	Yearbook/Digital Photography	1.0
List alternates below – rank order alternates in the event primary choice is not available. Rank 1 = first alternate, 2 = second alternate, etc.			
Rank	Course Number	Title	Credit
1	KM08513	Orchestra: Beginning	1.0
2	KM08534	eSports	1.0
3	KM08824	Ka Papa Hana No’eau [Visual Art]	1.0
4	KM08526	Papa Oli me Hula 2: Intermediate	1.0
5	KM08538	Digital Mo’olelo	1.0
6	KM08828	Christian Leadership	1.0

Now, personalize and rank your choices.  
 Keep this handy until it's time to submit via KS Connect:

Rank	Course Number	Title	Credit
Primary			1.0
List alternates below – rank order alternates in the event primary choice is not available. Rank 1 = first alternate, 2 = second alternate, etc.			
Rank	Course Number	Title	Credit
1			1.0
2			1.0
3			1.0
4			1.0
5			1.0
6			1.0



2021-2022 KMS Course Planning Worksheet

**NĀ PAPA ‘ĪNA‘I: Elective Courses**

Other Electives	Christian Leadership	KM08828
	Papa Himeni: Praise & Worship	KM08829
Performing Arts	Band: Beginning	KM08506
	Band: Concert	KM08507
	Kanikapila	KM08535
	Orchestra: <u>Beginning</u>	KM08513
	Orchestra: <u>Concert</u>	KM08537
	Papa Oli me Hula 1: Beginning	KM08528
	Papa Oli me Hula 2: Intermediate	KM08526
Technology	Design Technology	KM08533
	eSports	KM08534
	Industrial Technology	KM07823
	Ka Papa Ka‘āmauloa: Perspectives in ‘Āina	KM08827
	Robotics: Advanced	KM08602
	Robotics: Beginning	KM08556
Visual Arts	Digital Mo‘olelo	KM08538
	Ka Papa Hana No‘eau [Visual Art]	KM08824
	Yearbook/Digital Photography	KM08550

