

SCHOOL YEAR 2020-2021



KAMEHAMEHA SCHOOLS®

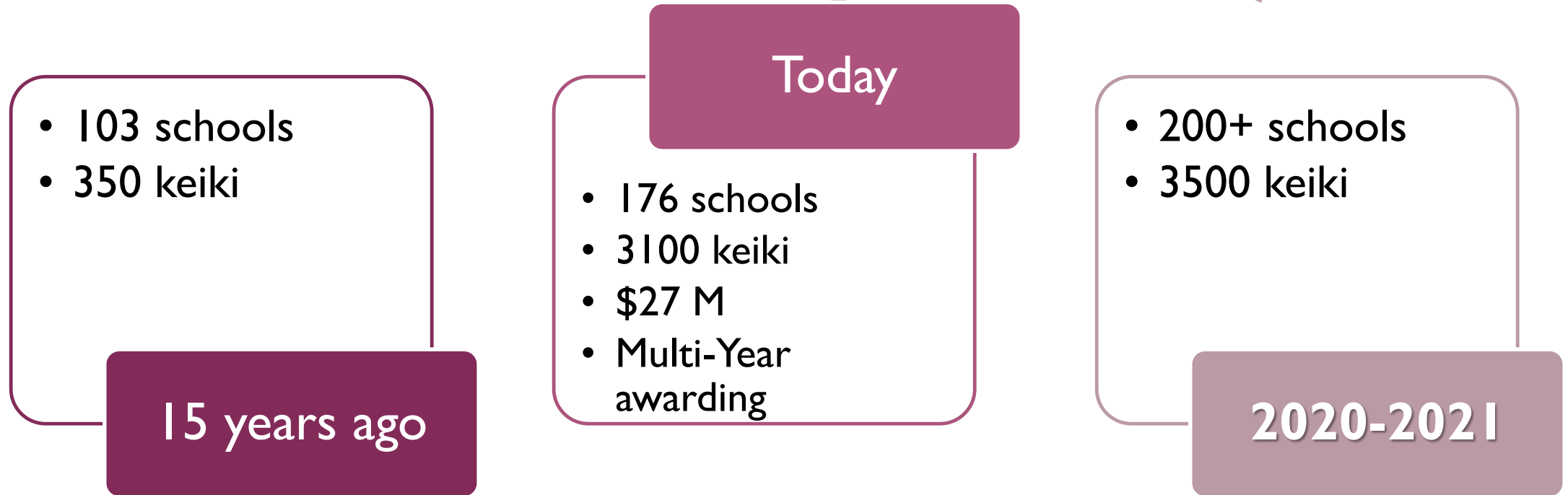
SCHOOL COLLABORATOR INFORMATION SESSION



- PROGRAM GROWTH
- PROGRAM UPDATES
- KS PREK12 TEAM

PAUAHI KEIKI SCHOLARS PROGRAM

PROGRAM GROWTH





PROGRAM UPDATES

- 2019-2020 PROGRAM INFORMATION
- 2020-2021 SCHOOL APPLICATION
- SCHOOL EXPECTATIONS

PROGRAM INFORMATION (2019-2020)

APPLICANT ELIGIBILITY REQUIREMENT

- State of Hawai'i Resident
- Born 2014, 2015, 2016
- Entering into a preschool program
- Enroll at a participating PKS preschool
- Complete the KS Admissions process
- Complete the KS Financial Aid Assessment

APPLICATION PROCESS

- Two Part Process for NEW applicants (Part 1)
- Renewal – multi-year award recipients do not need to complete an application.
- Renewal – one year scholarship applicants complete part 2 only
 - KS Financial Aid Assessment
- Award Notifications:
 - Friday, May 10, 2019

SCHOOL COLLABORATOR STEPS

Enrollment Confirmation

- KS School Portal
- Opens June 2019
- Closes August 2019

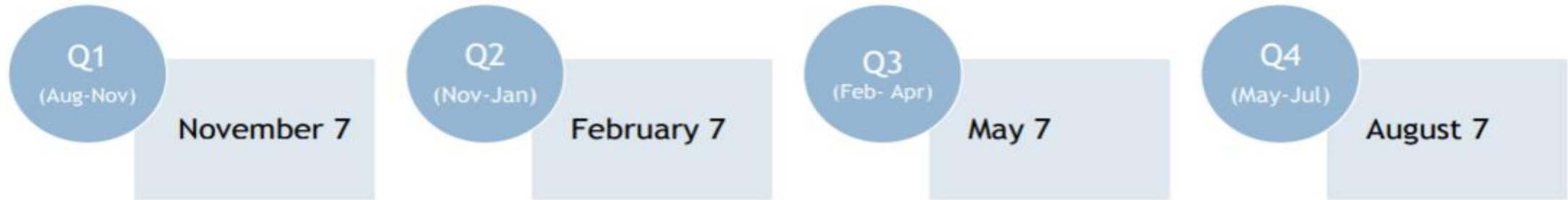
Provide Service Learning Opportunities

- PKS 'ohana requirements

Keep KS Informed of Changes

- Enrollment changes
- Subsidy adjustments

PKS 'OHANA REQUIREMENTS



SERVICE HOURS: 5 hours per quarter (20 total hours)
ATTENDANCE: 85% attendance
No more than 3 days of unexcused absences

2020-2021 SCHOOL APPLICATION

NO APPLICATION
TO REAPPLY

NEW SCHOOLS
Contact KS directly
for participation

PKS Expansion
Schools

60 schools

Continue to monitor

Develop
Improvement Plan

Notification of
PKS
participation
October 2019

SCHOOL COLLABORATOR EXPECTATIONS

- Understand that KS may remove any school from participation at any time.
- Submit published rates by July 31.
- KS will not adjust award if tuition rates increase after the application deadline.
- Provide enrollment confirmation to KS by August 31.
- Understand that disbursements are contingent on school and family requirements.
- Final disbursements for each academic year are made no later than **September 30 each year**
 - Award amounts: up to \$900 per month

SCHOOL COLLABORATOR EXPECTATIONS

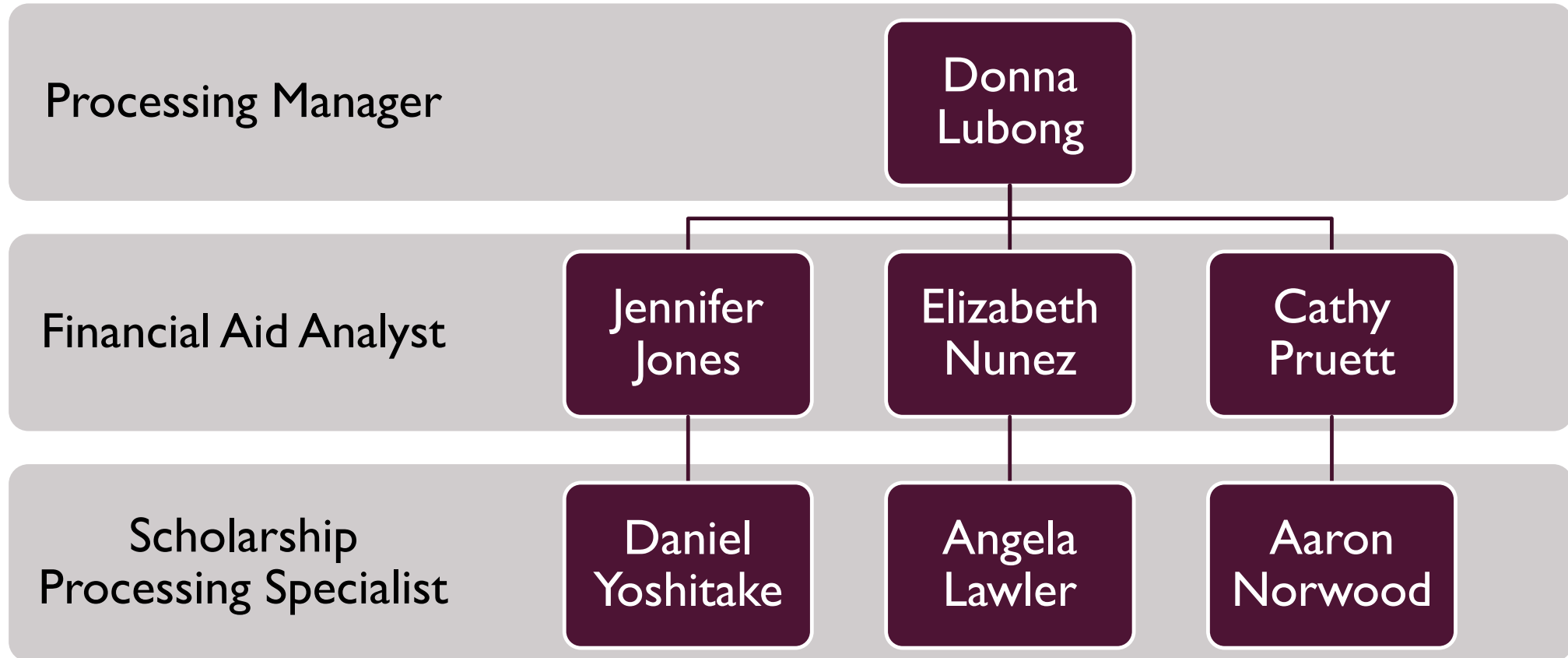
- Student retention in school program are the responsibility of parent and school.
- Awards are paid to the school on behalf of the student.
- Schools must provide adequate volunteer opportunities to families.
- Schools will allow KS to take photos of students for marketing purposes.
- Families who do not meet KS requirements may be terminated. KS will notify schools.
- Schools are not allowed to market KS, its logo or likeness.
- Schools will return any unused funds to KS within 30 days of change (e.g. withdrawals, disenrollment)



KS PREK12 TEAM

- PROCESSING TEAM
- BUDGET & AWARDS TEAM

KS PREK-12 PROCESSING TEAM



KS PREK-12 BUDGET & AWARDS TEAM



- ❑ KIPONA SCHOLARSHIP (family)
- ❑ School Collaborators (A-Kc)
- ❑ KS Financial Aid Program

Patti Rabacal
Phone: 808-534-8088
Email: parabaca@ksbe.edu



- ❑ PAUAHI KEIKI SCHOLARS (family)
- ❑ School Collaborators (Kd-Z)
- ❑ KS Financial Aid Program
- ❑ KS Summer School Financial Aid

Cherish Lum
Phone: 808-523-6264
Email: celum@ksbe.edu

