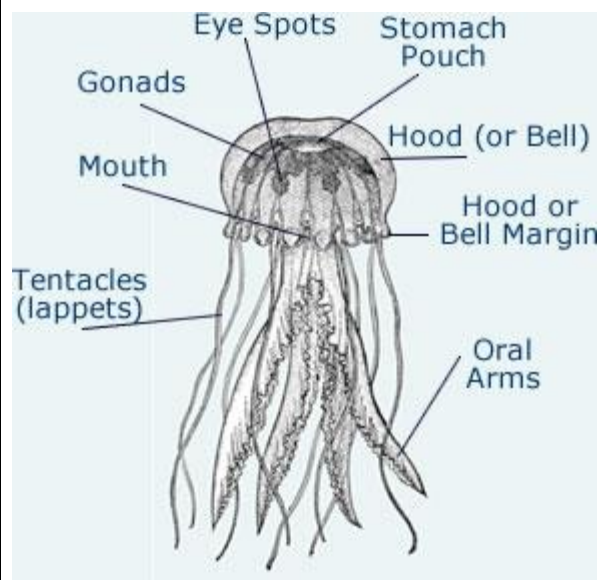


## Jellyfish Mini Lesson

| Ka Manawa (Time)           | Ke Kumuhana (Topic/Focus)   | Ka Hana (Task)  |
|----------------------------|---|---|
| 1:00 - 1:20 pm<br>(20 min) | <p>Jellyfish observations</p> <p>Open a new tab to open video</p>   | <p>Watch jellyfish video and take notes:</p> <p>Kilo:<br/> <a href="https://www.youtube.com/watch?v=pimIbTqJLZc">https://www.youtube.com/watch?v=pimIbTqJLZc</a></p> <p>Take notes on the jellyfish using a tree map</p> <ul style="list-style-type: none"> <li>• Structures</li> <li>• Functions</li> <li>• Diet</li> <li>• Threats</li> </ul> <p>Independent read:<br/> <a href="https://www.waikikiaquarium.org/experience/animal-guide/invertebrates/jellies/box-jellies/">https://www.waikikiaquarium.org/experience/animal-guide/invertebrates/jellies/box-jellies/</a></p> <p><a href="https://www.nationalgeographic.com/animals/invertebrates/group/box-jellyfish/">https://www.nationalgeographic.com/animals/invertebrates/group/box-jellyfish/</a></p> <p><a href="http://www.keliiskayak.com/jellyfish-of-maui/">http://www.keliiskayak.com/jellyfish-of-maui/</a></p> <p>Additional exploration:<br/> <a href="https://oceanexplorer.noaa.gov/facts/worldjellyfishday.html">https://oceanexplorer.noaa.gov/facts/worldjellyfishday.html</a></p> |
| 1:20 - 1:30<br>(10 min)    | Quick Write   | What I learned about the Jellyfish.   |
| 1:30 - 1:40 pm<br>(10 min) | <p>Jellyfish scientific drawing</p> <p>*Present guided drawing if there is confusion or concern from haumāna</p> <p><a href="https://www.youtube.com/watch?v=95jbxOCV4j0">https://www.youtube.com/watch?v=95jbxOCV4j0</a></p> | Draw and label jellyfish with its anatomy (only the highlighted parts)  |





|                            |   |  |
|----------------------------|---|--|
| 1:40 - 1:55 pm<br>(15 min) | Jellyfish drawing (does not need to be completed within 15, just need to start) | Add informational details, including colors, habitat drawings, interesting facts |
| 1:55-2:00 pm<br>(5 Min)    | Jellyfish share out   | Share out on padlet or google classroom.   |