



Investing in the Community

Kamehameha's Extension Education Division is on a mission to significantly impact the overall quality of life in and among Hawaiian communities



Members of the Extension Education Department's Leadership Planning Team include, front row from left: Associate Dean Terry Kelly, Dean Dr. **Juvenna Chang '60**, Fiscal Officer **Lahapa Haina Burke '60**. Back row: Enrichment Programs Director **Tony LeBron '71**, Literacy Enhancement Director Anna Sumida, Hawaiian Studies Institute Director **Kaipo Hale '68**, Grants Institute Director Elizabeth Aulsebrook, Health, Wellness and Family Education Director Dan Yahata, Literacy Enhancement Administrative Assistant **Nani Parilla Dudoit '78**, Career Education and Lifelong Learning Director **Dirk Soma '81**. Not pictured are Distance Learning Director Henry Meyer, Kamehameha Scholars Director Norma Kop and Community Learning Center at Nānākuli Director Paula-Ann Burgess-Tauala.

Kamehameha's 2000-2015 Strategic Plan promised to provide a wide range of quality educational programs and services to more people of Hawaiian ancestry – especially those who were not already being served by the Kapālama, Maui and Hawai'i K-12 campuses.

Today, the KS Extension Education Division is helping to turn that promise into reality.

As a result, *KS kūpuna* now share their knowledge of the history, traditions and features of island geographic regions with state public schoolchildren, teachers and other *kūpuna*; Hawaiian 105 KINE radio listeners across the globe can access free Hawaiian language lessons online; non-KS Hawai'i island students explore the historic and cultural environs of West Hawai'i via a week-long boarding experience; and Hawaiian families in selected areas cook and enjoy healthy foods and learn about traditional Hawaiian healing practices

And that's just the tip of the iceberg.

Historically, EED traces its roots to the early 1960s. Its most well-known program is Explorations, a popular summer one-week boarding and Hawaiian cultural experience enjoyed by more than 50,000 non-KS students over the last 36 years.



Left – The first episode of “Nahenahe” features, from left, guest artist Pekelo, studio musician Kimo Baker, co-host Robert Cazimero and (partially hidden) Bruddah Wade of Hawaiian 105 KINE. Kamehameha has received feedback on the show from listeners in Ohio, Virginia, New Jersey, Japan, California, Utah, Arizona and Florida as well as Hawai‘i.

Other programs have included alternative education for at-risk teenagers, a reading program for middle-school students in selected public schools and adult enrichment classes.

Combining lessons learned from the past with innovative new methods for efficient delivery of services and a more than \$7 million budget, EED now encompasses nine programs. They may range from short-term presentations to year-round programs.

“With the variety of services available through the division, there’s something for everyone. An entire family, in theory, could be serviced at different life stages,” said Terry Kelly, EED associate dean.

A large portion of the division’s success can be attributed to its many partnerships and collaborative efforts with the Hawai‘i state Department of Education and other state agencies, charter schools, Hawaiian organizations and even KS alumni.

“We have told our collaborators and target audiences that the communities we serve are going to look different as a result of our work. That’s EED’s vision, but it could be a collective vision because we cannot

make that impact alone,” said EED Dean Dr. **Juvenna Chang ‘60**.

To achieve that impact, established EED programs such as Enrichment, are introducing new initiatives to more Hawaiian learners.

Their week-long summer boarding program called Ho‘olauna Keauhou – for non-KS, Hawai‘i island students entering seventh grade – debuted this summer. The program takes participants to historically and culturally significant sites in West Hawai‘i, such as the Ka‘upulehu Cultural Center, the Oceanic Institute’s shrimp and aquaculture research facility, and the Amy Greenwell Ethnobotanical Garden.

The students also take part in hands-on activities including fishpond restoration, coconut weaving and clearing paths in dry land forests. In addition, they learn ‘*oli*, *pule*, *hoe wa‘a*, ‘*olelo Hawai‘i* and *mālama ‘āina* (chant, prayer, canoe paddling, Hawaiian language and land stewardship).

continued on next page



Above – The Hawaiian Studies Institute’s traveling resource program ‘Ike Pono Hawai‘i offers presentations on Hawaiian culture to non-KS schools in Hawai‘i and at selected mainland sites. Hawaiian studies specialists, from left, Nu‘u Atkins, **Naomi Chun ‘75** and **Lloyd Sing ‘89** took their van loaded with wooden and stone implements, *kapa*, replicas of feather capes and helmets and *pahu*, ‘*uli‘uli* and nose flutes to Utah, Washington and Oregon this summer.



Left – Retired Kamehameha Schools teachers, from left, Violet-Marie Mahela Rosehill, **Julie Stewart Williams ‘46** and Carinthia Harbottle promote ‘Ike Hawai‘i (knowledge of all things Hawaiian) through the HIS program Ka ‘Ike o na Kūpuna (the knowledge of the elders). Their visits to public schools statewide focus on the history, traditions and unique features of the regions where the schools are located.

On O‘ahu, in an effort to provide access to quality books in Nānākuli homes, the Literacy Enhancement Program facilitated two book drives in the past 12 months that resulted in the donation of nearly 6,000 books to families of Nānāikapono and Nānākuli Elementary schools.

“Nānākuli doesn’t have its own public library and often, the school libraries don’t allow the children to take books home for fear that the books won’t be returned,” said Literacy Enhancement Program Director Anna Sumida.

Reaching beyond traditional boundaries, the Distance Learning (DL) program partnered with radio station Hawaiian 105 KINE to offer an innovative Hawaiian language series called “Nahenahe: Sweet Melodies of Hawai‘i.” The show, co-hosted by Leeward Community College Hawaiian language instructor Ekela Kani‘aupio-Crozier and **Robert Cazimero ‘67**, promotes the learning and appreciation of Hawaiian language through the study of various Hawaiian *mele*. Broadcasts are live on the Internet at noon Hawai‘i standard time on select dates through September and learners may continue to access archived lessons at hawaiian105.com/ksbe.

Distance Learning also produces a bi-monthly television program called “‘Ike Pono” that provides a forum for discussion of educational issues related to the Hawaiian learning community. The show airs on educational access television statewide.

DOE Superintendent Pat Hamamoto, Gov. Linda Lingle, Department of Hawaiian Home Lands Director **Micah Kane ‘87** and Queen Lili‘uokalani Children’s Center trustee **Thomas Kaulukukui Jr. ‘63** have been guests.

Other panelists have included educators with expertise in technology, Hawaiian immersion, charter schools and literacy.

In addition to finding new approaches for established programs to provide services, a handful of EED’s programs are new initiatives developed to fill identified gaps in service to the Hawaiian learning community. These new programs play an integral role in helping KS ensure that Pauahi’s legacy lives.

In a letter to Grants Institute director Elizabeth Aulsebrook, **Nalani Mattox-Primacio ‘76**, executive director of Nā Kamalei-Ko‘olauloa Early Education Program, said, “Your service to help us locate grants is unmatched in the community. Retaining and supporting this program is vital to KS’ strategic plan. It is one way you can make sure the Princess’ will is followed.”



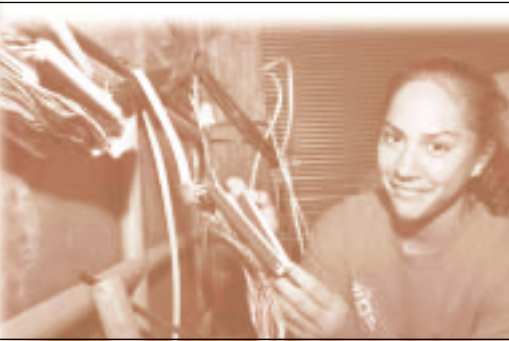
Above – Health, Wellness and Family Education Program Specialist **Sharon Soong Odom ‘76** (second from left) works with instructors from the Hawaiian language charter school Ke Kula ‘o Samuel M. Kamakau to develop curriculum for a *lā‘au lapa‘au* (medicinal plants) and science week. Here, instructor Kameha‘ililani Waiiau (right) shows students how to identify *lā‘au* plants using taxonomy identification techniques.

Left – More than 50,000 non-Kamehameha Schools students have enjoyed the summer boarding experience Explorations in the last 36 years. Here, a group takes in a visit to the Hawai‘i Maritime Center.



Left – Kahuku High School students on a technology career pathway recently benefitted from an internship opportunity at 'Ohana Telcom/Construction Inc. The program was coordinated through a partnership between Kamehameha's Career Education and Lifelong Learning Program, the state Department of Education and the Native Hawaiian Chamber of Commerce.

Below – Kahuku High sophomore Kahanu AhPuck wires fiber optic cable.



The Grants Institute, developed to assist Native Hawaiian organizations successfully access grant funding from public and private sources, has helped more than 200 individuals in

its first year and Aulsebrook projects that the number will more than double in the coming year.

Other new initiatives include the Health, Wellness and Family Education Program, designed to improve the health and well-being of Hawaiian families through education; a program called Kamehameha Scholars which provides opportunities for non-KS students to enhance their educational experiences at their respective schools; and the Nānākuli Learning Center, which provides a wide-range of services to the Leeward community.

During the 2002-2003 fiscal year, the division's administrative, program and support staff of 66 provided some type of educational service to 113,000 people, an amount projected to significantly increase in the next five years.

"What we're envisioning is that our learners will be touched over time by KS programs that will open more options for the future and contribute to positive growth or change in the community," Chang said.

"I would hope that our reach is meaningful and that we continue to work in partnership with others to create communities that are thriving with healthy, highly-skilled and well-educated people of Hawaiian ancestry."

KS Extension Education Programs

Career Education and Lifelong Learning (808) 843-3521

Provides support services to youth for career preparation and personal/professional enrichment opportunities for adults.

Community Learning Center at Nānākuli (808) 668-1517

Provides a wide range of services, including computer/technology access and support, through KS programs and other service providers to the Leeward community.

Distance Learning (808) 842-8877

Extends the reach of KS worldwide using online and broadcast technology and programs such as Kulāiwi, 'Ike Pono and Nahenahe.

Enrichment Programs (808) 842-8761 or (808) 842-8793

Provides meaningful educational and cultural experiences to youth of all ages such as Explorations, Computer Camp and Ho'olauna Keauhou.

Grants Institute (808) 842-8718

Provides assistance to Hawaiian communities and organizations through grant preparation and proposal workshops, information sharing, brokering resources and building supportive networks.

Hawaiian Studies Institute (808) 842-8214

Provides programs and materials such as a traveling resource unit and kūpuna presentations in the schools to support the preservation and perpetuation of Hawai'i's culture, language and history.

Health, Wellness and Family Education (808) 842-8508

Provides culturally appropriate educational services and products to increase resiliency, decrease at-risk behaviors (such as substance abuse and violence) and improve the health and well-being of Native Hawaiian families.

Kamehameha Scholars (808) 845-3535

Provides support services and resources to enable youth to achieve personal growth and educational success while enhancing post-secondary educational options.

Literacy Enhancement (808) 843-3332

Provides instructional support, tutoring and parent education to establish a strong foundation in literacy for school-age children, their families and communities.

For more information, please contact program staff at the phone numbers listed above or call toll-free 1-800-842-IMUA (4682).